

ACADEMIC YEAR 2025-26

**\$19.3M**

**TOTAL SAVED**

by Alaska students through WICHE's Student Access Programs.

**\$18.5M**

**SAVED through WUE**

**\$782K**

**SAVED through WRGP**

**WESTERN UNDERGRADUATE EXCHANGE**



**WUE**

Saves **UNDERGRADUATE** students on out-of-state tuition. They pay no more than 150% of in-state tuition at partner institutions across the West.

Top Alaska WUE schools for out-of-state undergraduate students:

- ▶ **University of Alaska Fairbanks (291)**
- ▶ **University of Alaska Anchorage (171)**
- ▶ **University of Alaska Southeast (66)**

Top out-of-state WUE schools for Alaska undergraduate students:

- ▶ **Northern Arizona University (117)**
- ▶ **University of Hawai'i at Mānoa (89)**
- ▶ **Montana State University, Bozeman (84)**

**WESTERN REGIONAL GRADUATE PROGRAM**



**WRGP**

Saves **GRADUATE** students on out-of-state certificate, master's, and doctoral programs. They pay no more than 150% of in-state tuition at partner institutions across the West.

Top Alaska WRGP schools for out-of-state graduate students:

- ▶ **University of Alaska Anchorage (42)**
- ▶ **University of Alaska Southeast (11)**

Top out-of-state WRGP schools for Alaska graduate students:

- ▶ **Eastern New Mexico University (7)**
- ▶ **University of Hawai'i at Mānoa (5)**
- ▶ **University of Idaho (5)**

**PROFESSIONAL STUDENT EXCHANGE PROGRAM**



**PSEP**

Helps students pursuing careers in **10 HEALTH FIELDS**. They can enroll in programs in the WICHE region and receive substantial tuition support from their home state/territory.

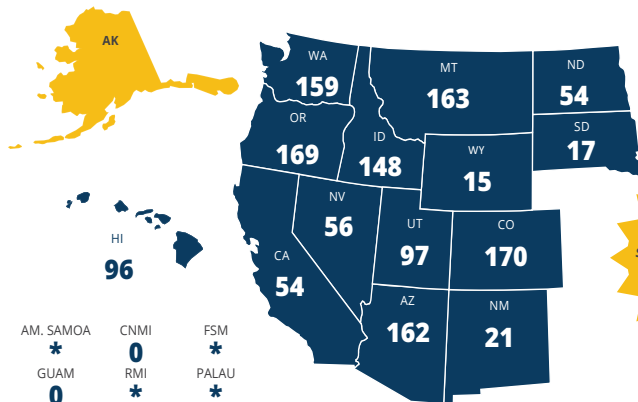
**72% of Alaska's PSEP graduates returned home to practice** (2012-21). Students are not contractually required to return.

**Alaska did not have any students enrolled through PSEP** in AY 2025-26. The state of Alaska supports its residents in seven healthcare professions offered through PSEP.

**11,068% ROI** Gained on Alaska's WICHE annual dues (\$174,500/FY 2026)

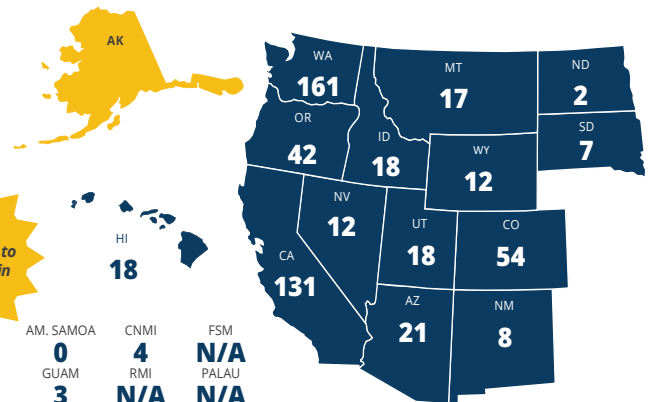
## WUE

WUE STUDENTS **FROM** ALASKA: **1,381**



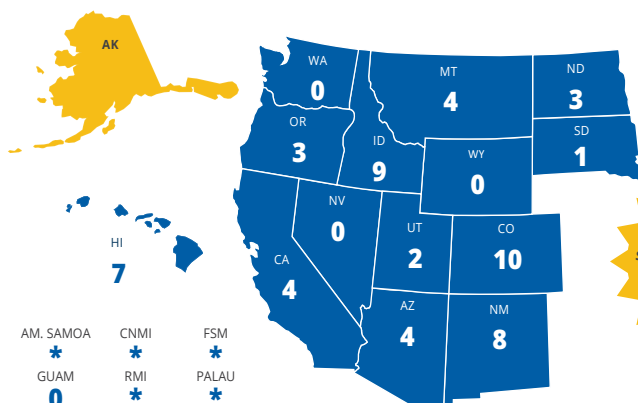
\* Currently do not have any participating WUE schools.

WUE STUDENTS **TO** ALASKA: **528**



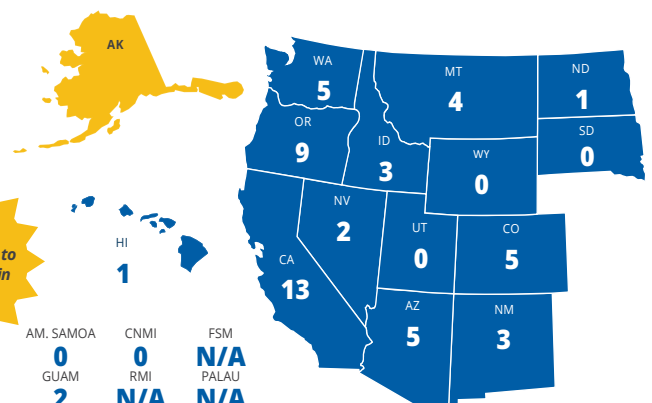
## WRGP

WRGP STUDENTS **FROM** ALASKA: **55**



\* Currently do not have any participating WRGP schools.

WRGP STUDENTS **TO** ALASKA: **53**



## PSEP

Alaska did not have any students enroll through PSEP during the current academic year. However, Alaska residents can use PSEP for these healthcare professions:

- ▶ Dentistry
- ▶ Occupational Therapy
- ▶ Optometry
- ▶ Pharmacy
- ▶ Physical Therapy
- ▶ Physician Assistant
- ▶ Podiatry

# STRENGTHENING ALASKA AND THE WEST

WICHE brings together senior leaders and partners to foster dialogue about issues facing institutions and states through its leadership and professional development networks.

## WESTERN ACADEMIC LEADERSHIP FORUM – 4-YEAR INSTITUTIONS

- ▶ Alaska Commission on Postsecondary Education
- ▶ University of Alaska Anchorage
- ▶ University of Alaska Fairbanks
- ▶ University of Alaska Southeast
- ▶ University of Alaska System

Brian Smentkowski, University of Alaska System, serves on the Forum executive committee.

**WESTERN ACADEMIC LEADERSHIP ACADEMY** is a yearlong professional development program for academic leaders aspiring to become chief academic officers in the WICHE region. Fourteen cohort members from Alaska institutions have participated in the Academy since its inception in 2015. Denise Runge, University of Alaska Anchorage, serves as a primary faculty member for the Academy.

WICHE convenes the **OERWEST NETWORK** as part of a national effort to expand free course materials and other open educational resources (OER) that reduce textbook costs and support student success. WICHE is also conducting a regional landscape analysis examining how textbook price transparency and affordability policies are being implemented across the West.

WICHE's Behavioral Health Program (BHP) contracts with the Alaska Department of Health and Social Services (DHSS), Division of Behavioral Health, and the Alaska Mental Health Trust Authority, to support the **ALASKA PSYCHOLOGY INTERNSHIP CONSORTIUM (AK-PIC)** to complete the training of students enrolled at the University of Alaska's doctoral program in clinical-community psychology, as well as other psychology doctoral students who wish to train and work in Alaska.

WICHE's BHP is conducting **DESCRIPTIVE RESEARCH ON THE ALASKA BEHAVIORAL HEALTH AIDE PROGRAM (AK BHA)**. Through the project funded by a National Institutes of Health research grant, WICHE's BHP collaborates with the Northwest Indian College, the Center for Alaska Native Health Research at the University of Alaska Fairbanks, and the Alaska Native Tribal Health Consortium to describe and evaluate the Alaska Native Tribal Health Consortium's innovative approach to training

Created by the WICHE Commission in 1995, the **LEGISLATIVE ADVISORY COMMITTEE (LAC)** works to strengthen state-level postsecondary policymaking across the West. Members are state legislators appointed by the WICHE Commissioners in the region to explore emerging policy issues and develop strategies for interstate collaboration.

- ▶ **Senator Mike Cronk**
- ▶ **Representative Justin Ruffridge**
- ▶ **Representative Andi Story**
- ▶ **Senator Löki Tobin**

behavioral health aides (BHA). The AK BHA provides training and education to village-based counselors, increasing the workforce in remote areas. This three-phase research project will support the long-term goal of gathering evidence on the effectiveness of the AK BHA program in building local capacity for place-based behavioral health services in rural and remote American Indian and Alaska Native community settings.

WICHE's BHP was selected through a competitive bidding process to assist the **ALASKA PSYCHIATRIC INSTITUTE (API)** in maintaining compliance with regulating agencies through review of policies, health information management, infection control, milieu management, risk management, medical staff credentialing, pharmacy practices, and life safety code and environment of care.

**WCET – THE WICHE COOPERATIVE FOR EDUCATIONAL TECHNOLOGIES** is the leader in the practice, policy, and advocacy of technology-enhanced digital learning in higher education. Its growing membership includes institutions, higher education agencies and systems, nonprofit organizations, government agencies, and corporations in all U.S. states and several Canadian provinces. WCET members include:

- ▶ Alaska Commission on Postsecondary Education
- ▶ University of Alaska Anchorage
- ▶ University of Alaska Fairbanks

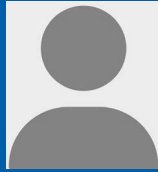
**STATE AUTHORIZATION NETWORK (SAN)** guides institutions through state regulations around online courses and programs. SAN members include:

- ▶ Alaska Commission on Postsecondary Education
- ▶ University of Alaska Anchorage
- ▶ University of Alaska Fairbanks

## Alaska Commissioners



**Tom Begich**  
Executive Director,  
Nick Begich  
Scholarship Intern  
Fund



**Aparna Dileep-  
Nageswaran Palmer**  
Chancellor,  
University of Alaska  
Southeast



**Vacant**

## Distance Education Reciprocity

Alaska institutions save money on out-of-state authorization fees by participating in the State Authorization Reciprocity Agreement (SARA) through WICHE. This voluntary agreement provides reciprocity for the state authorization of distance education, while ensuring meaningful consumer protections for students and reducing regulatory red-tape for institutions.

**\$642k** ALASKA ESTIMATED ANNUAL SAVINGS

## Cost-savings Partnerships

WICHE offers pre-negotiated student health and technology contracts to colleges and universities, K-12 school districts, state and local governments, and education-related nonprofits through a cost-savings program with the Midwestern Higher Education Compact (MHEC). Last year, participating entities saved an average of 9% compared with other purchasing options.

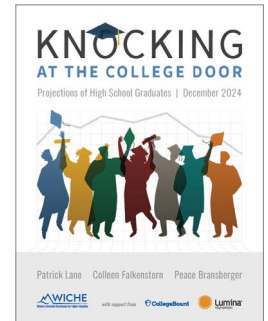
**\$91.4k** ALASKA ESTIMATED ANNUAL SAVINGS

## Data and Policy Resources for Alaska

Policymakers and campus leaders in Alaska can explore WICHE's data and policy resources to better understand what's happening at home and across the West. These resources provide reliable state-level and regional insights to help make informed, strategic decisions that strengthen postsecondary education and workforce outcomes.

- ▶ **Knocking at the College Door** is the leading U.S. resource for projections of high school graduates. Visit [wiche.edu/knocking](https://wiche.edu/knocking) to access reports, interactive dashboards, webinars, presentations, as well as state-level data.
- ▶ **Tuition and Fees in the West** includes tuition, fees, and enrollment data about 350+ public institutions in the West.
- ▶ **Benchmarks: WICHE Region** presents information on the West's progress in improving access to, success in, and financing of higher education.
- ▶ Data on over 35 indicators in WICHE's **Regional Fact Book for Higher Education in the West**.
- ▶ With support from the ECMC Foundation, WICHE equips state leaders with analysis and resources on **Completion Strategies in the West** to increase credential completion and improve student success across states.

Our data experts provide research, analysis, and peer collaboration opportunities on key higher education issues, including workforce development, state finance, transfer, student success strategies, and more, to help decision-makers develop evidence-based, effective policy solutions.



## About WICHE

The Western Interstate Commission for Higher Education (WICHE) is a regional interstate higher education compact of 15 Western states and the U.S. Pacific Territories and Freely Associated States. Since 1953, WICHE has focused on its mission of expanding educational access and excellence for all residents of the West. By promoting innovation, cooperation, resource sharing, and sound public policy, WICHE strengthens higher education's contributions to the region's social, economic, and civic life. Visit [wiche.edu](https://wiche.edu).