



LARAMIE COUNTY COMMUNITY COLLEGE
CHEYENNE, WY

WESTERN ALLIANCE OF COMMUNITY
COLLEGE ACADEMIC LEADERS

ANNUAL MEETING

APRIL 15-17, 2026

Leading the Resilient
Community College






About WICHE

The Western Interstate Commission for Higher Education (WICHE) is a regional interstate higher education compact of 15 Western states and the U.S. Pacific Territories and Freely Associated States. Since 1953, WICHE has focused on its mission of expanding educational access and excellence for all residents of the West. By promoting innovation, cooperation, resource sharing, and sound public policy, WICHE strengthens higher education’s contributions to the region’s social, economic, and civic life. Visit wiche.edu.

Accessibility Statement

This document has been created with accessibility in mind. Consideration of heading structure, content labels, and alternate descriptions have been carefully applied to maximize both usability and accessibility of the information within this publication. Effort has been made to follow recognized accessibility standards and best practices, ensuring that content is perceivable, operable, understandable, and robust for everyone regardless of platform or assistive technologies. While no document can be guaranteed to be entirely barrier-free for all people, every effort has been taken to minimize obstacles and provide content that supports the widest possible audience. For more information, email info@wiche.edu.

2026 Western Alliance for Community College Academic Leaders Annual Meeting © 2026 by Western Interstate Commission for Higher Education, licensed under [CC BY-NC-SA 4.0](https://creativecommons.org/licenses/by-nc-sa/4.0/). Western Interstate Commission for Higher Education, 3035 Center Green Drive, Suite 200, Boulder, CO 80301

 CC BY-NC-SA 4.0
Creative Commons Attribution-NonCommercial-ShareAlike 4.0 International

On the cover: “[My Public Lands Roadtrip: BLM Wyoming](#)” by [Bureau of Land Management](#), [CC BY 2.0](#) (*changes made*)

MESSAGE FROM THE CHAIR

On behalf of your executive committee and our colleagues at WICHE, I'm delighted to welcome you to our annual meeting at Laramie County Community College. This year's theme, Leading the Resilient Community College, reflects both the moment we are in and the collective strength of our work as academic leaders.

As we continue to navigate shifting policy landscapes, changing workforce needs, evolving enrollment trends, and rapid technological disruption, resilience is not just an aspiration — it is an essential leadership practice. This gathering offers us a meaningful space to think strategically, exchange ideas, and learn from one another as we explore what resilient leadership looks like in action. We'll explore bold ideas and practical strategies, but just as importantly, we'll reconnect, recharge, and remind ourselves why this work matters so much to our students and our communities.

I look forward to the conversations we'll have, the perspectives you'll bring, and the momentum we'll build together. Thank you for joining us — and welcome to Cheyenne. I'm so glad you're here!



Kari Brown-Herbst, Ph.D., Alliance Chair

Senior Vice President of Academic Affairs, Laramie County Community College

About the Western Alliance of Community College Academic Leaders

The Western Alliance of Community College Academic Leaders (Alliance) is a membership group housed at the Western Interstate Commission for Higher Education (WICHE). The Alliance serves to advance WICHE's mission and vision by fostering a collaborative community of provosts and other senior academic leaders at two-year institutions across the region. The Alliance enables institution-level, system-level, and state-level academic leaders to directly connect with peers across the West. Alliance members get to learn with and from each other as they collectively navigate contemporary challenges, evolving policy landscapes, and opportunities for innovation in postsecondary education. Together, we will help build a stronger future for higher education in the West.

SCHEDULE AT A GLANCE

Wednesday, April 15

Laramie County Community College, Center for Conferences and Institutes (CCI) Building

Noon – 3:30 p.m.	Registration Open Executive Committee only
12:00 p.m. – 1:30 p.m.	Lunch Executive Committee only
1:30 p.m. – 3:30 p.m.	Executive Committee Meeting Executive Committee only
5:00 p.m. – 8:00 p.m.	Registration Open
5:00 p.m. – 6:00 p.m.	Welcome Reception
6:00 p.m. – 8:00 p.m.	Dinner and Plenary Session Resilient by Design: The Future of America’s Community Colleges

Thursday, April 16

Laramie County Community College, Center for Conferences and Institutes (CCI) Building

7:30 a.m. – 4:45 p.m.	Registration Open
7:30 a.m. – 8:30 a.m.	Breakfast
8:30 a.m. – 9:00 a.m.	Welcome and Meeting Overview
9:00 a.m. – 10:00 a.m.	Keynote Address Leading Through Disruption: Resilience and the Future of Community Colleges
10:00 a.m. – 10:15 a.m.	Break
10:15 a.m. – 11:05 a.m.	Concurrent Sessions <ul style="list-style-type: none">• Your Roadmap to CTE Programs and a Working Professional• Growing Open: Cultivating a Campus Where OER Thrives
11:05 a.m. – 11:20 a.m.	Break

11:20 a.m. – 12:15 p.m.	Campus Mental Health and Substance Use Issues in the West
12:15 p.m. – 1:30 p.m.	Lunch
1:30 p.m. – 2:20 p.m.	Case Studies for Community College Leaders
2:20 p.m. – 2:35 p.m.	Break
2:35 p.m. – 3:25 p.m.	Concurrent Sessions <ul style="list-style-type: none"> • Reimagining Strategies for Success: Unlocking the Student Experience • Technology and Partnerships for Transfer Success: Spotlight on University of Northern Colorado and Laramie County Community College
3:25 p.m. – 3:40 p.m.	Break
3:40 p.m. – 4:30 p.m.	State of Workforce Pell
4:30 p.m. – 4:45 p.m.	Wrap Up and Adjournment
	<i>Dinner on your own</i>

Friday, April 17

Laramie County Community College, Center for Conferences and Institutes (CCI) Building

8:00 a.m. - 9:00 a.m.	Breakfast
9:00 a.m. - 9:30 a.m.	Alliance Membership Meeting
9:30 a.m. - 10:30 a.m.	Building Resiliency in Wyoming Community Colleges Through a Statewide Alignment of Education and Workforce Development
10:30 a.m. - 10:45 a.m.	Adjournment
10:45 a.m. - 11:00 a.m.	Break
11:00 a.m. – Noon	<i>Optional: LCCC Campus Tour</i>

PROGRAM SESSIONS AND SPEAKERS

Wednesday, April 15

Laramie County Community College, Center for Conferences and Institutes (CCI) Building

Noon – 3:30 p.m.

Inside CCI Entrance

Registration Open

Executive Committee only

12:00 p.m. – 1:30 p.m.

Lunch

Executive Committee only

1:30 p.m. – 3:30 p.m.

Room 123

Executive Committee Meeting

Executive Committee only

5:00 p.m. – 8:00 p.m.

Registration Open

5:00 p.m. – 6:00 p.m.

*Surbrugg/Prentice
Auditorium*

Welcome Reception

Join us for an evening reception featuring great conversation, refreshments, and opportunities to connect with fellow attendees.

6:00 p.m. – 8:00 p.m.

Room 130

Dinner and Plenary Session

Resilient by Design: The Future of America's Community Colleges

Drawn from NCHEMS' work preparing Resilient by Design, a national, sector-level environmental scan for the American Association of Community Colleges (ACCC), this presentation discusses some of the largest external forces, trends, and patterns that will affect community colleges over the next decade(s) and the implications for colleges' future work.

Introducer: Kari Brown-Herbst, Alliance Chair, Laramie County Community College

Speaker: Louisa Hunkerstorm, National Center for Higher Education Management Systems (NCHEMS)

Thursday, April 16

Laramie County Community College, Center for Conferences and Institutes (CCI) Building

7:30 a.m. – 4:45 p.m.

Inside CCI Entrance

Registration Open

<p>7:30 a.m. – 8:30 a.m. <i>Room 129</i></p>	<p>Breakfast</p>
<p>8:30 a.m. – 9:00 a.m. <i>Room 130</i></p>	<p>Welcome and Meeting Overview Speakers: Kari Brown-Herbst, Alliance Chair, Laramie County Community College Nicholas Fuselier, WICHE</p>
<p>9:00 a.m. – 10:00 a.m. <i>Room 130</i></p>	<p>Keynote Address Leading Through Disruption: Resilience and the Future of Community Colleges The model of higher education that served the 20th century is under pressure from nearly every direction — demographic change, new competitors, rising expectations for value, and the rapid advancement of artificial intelligence. In this environment, resilience is not about defending the past, but about leading institutions that can evolve while remaining true to their mission. This presentation explores how community colleges can and must remain resilient while navigating this period of transformation. Introducer: Kari Brown-Herbst, Alliance Chair, Laramie County Community College Speaker: Commissioner Joseph Schaffer, President, Laramie County Community College</p>
<p>10:00 a.m. – 10:15 a.m.</p>	<p>Break</p>
<p>10:15 a.m. – 11:05 a.m. <i>Room 123</i></p>	<p>Concurrent Sessions Your Roadmap to CTE Programs and a Working Professional Learn how hybrid CTE formats increase access, flexibility, and completion for today's learners. This session examines effective online-in-person integration and showcases models that maintain high-quality, hands-on training while meeting the needs of working students and/or adults returning to college for career change or advancement. Speakers: Abigail Loya, Great Basin College Sarah Negrete, Great Basin College Dave Stoddard, Great Basin College</p>
<p><i>Room 124</i></p>	<p>Growing Open: Cultivating a Campus Where OER Thrives This session offers a quick introduction to open educational resources (OER), shares one community college's open journey, and invites leaders into a discussion on mitigating potential risks to OER, strengthening support, and expanding OER adoption to drive affordability and student success. Speaker: Maggie Swanger, Laramie County Community College</p>

11:05 a.m. – 11:20 a.m.

Break

11:20 a.m. – 12:15 p.m.

Room 130

Campus Mental Health and Substance Use Issues in the West

This presentation will describe the behavioral health status, health service utilization, and help-seeking behaviors of students attending institutions in WICHE states who participated in the 2023-2024 Healthy Minds Study. It will also discuss implications for campus behavioral health programs.

Speakers:

Amanda Gentz, WICHE

Tonya Horn, WICHE

12:15 p.m. – 1:30 p.m.

Room 129

Lunch

Join us for a networking lunch where we will also recognize this year's winner of the Bernice Joseph Leadership Award and graduates of the Western Academic Leadership Academy from Alliance member institutions.

Speaker: Amardeep Kahlon, Alliance Vice Chair, Central New Mexico Community College

1:30 p.m. – 2:20 p.m.

Room 130

Case Studies for Community College Leaders

This session features a series of real-world case studies designed specifically for chief academic officers and senior academic leaders at community and technical colleges. In small groups, participants will explore practical examples of institutional challenges and identify strategies that leaders can use to address them. Together, we will discuss how to lead, solve problems, seize opportunities, and build the resilient institutions our communities deserve.

Moderators:

Nick Fuselier, WICHE

Alliance Executive Committee Members

2:20 p.m. – 2:35 p.m.

Break

<p>2:35 p.m. – 3:25 p.m. <i>Room 123</i></p>	<p>Concurrent Sessions</p> <p>Reimagining Strategies for Success: Unlocking the Student Experience</p> <p>Laramie County Community College (LCCC) comprehensively redesigned the college’s first-year success course. Grounded in the Ask-Connect-Inspire-Plan (ACIP) framework developed by the Community College Research Center (CCRC), the project enhanced student onboarding and engagement through contextualized, pathway-specific learning experiences.</p> <p>Speakers: Meghan Kelly, Laramie County Community College Trent Morrell, Laramie County Community College</p>
<p><i>Room 124</i></p>	<p>Technology and Partnerships for Transfer Success: Spotlight on University of Northern Colorado and Laramie County Community College</p> <p>The Technology and Partnerships for Transfer Success project, administered by WICHE from 2023–25, pairs four-year universities or university systems with a partner two-year college or technical school to co-invest in a technology solution to improve pathways for students transferring between the two postsecondary institutions. This presentation will provide an overview of the participating projects and institutions. Representatives from Laramie County Community College and the University of Northern Colorado will provide insight and context into how their selected technology solution enhances and integrates into a broader transfer strategy and student mobility between the two institutions.</p> <p>Speakers: Ashley Duran, University of Northern Colorado Stacy Maestas, Laramie County Community College Olivia Tufo, WICHE</p>
<p>3:25 p.m. – 3:40 p.m.</p>	<p>Break</p>
<p>3:40 p.m. – 4:30 p.m. <i>Room 130</i></p>	<p>The State of Workforce Pell</p> <p>The broad framework of Workforce Pell programs is largely defined in statute, but many of the operationally necessary details remain to be defined, even as institutions are working to have qualifying programs ready in the coming months. This session will provide an overview of what we know, what remains to be defined, and how states and institutions are navigating the implementation.</p> <p>Speakers: Amardeep Kahlon, Central New Mexico College Patrick Lane, WICHE</p>
<p>4:30 p.m. – 4:45 p.m.</p>	<p>Wrap Up and Adjournment</p> <p><i>Dinner on your own</i></p>

Friday, April 17

Laramie County Community College, Center for Conferences and Institutes (CCI) Building

8:00 a.m. - 9:00 a.m.

Breakfast

Room 129

9:00 a.m. - 9:30 a.m.

Alliance Membership Meeting

Room 130

Learn about what is happening at WICHE in relation to programs, events, and opportunities for your institutions.

Speakers:

Nicholas Fuselier, WICHE

Kay Hulstrom, WICHE

Olivia Tufo, WICHE

9:30 a.m. - 10:30 a.m.

Building Resiliency in Wyoming Community Colleges Through a Statewide Alignment of Education and Workforce Development

Room 130

A panel of leaders across Wyoming will lead a discussion of how the Wyoming Innovation Partnership (WIP), a statewide partnership of higher education, workforce services, K-12 education, and industry, spurs innovation, collaboration, and resiliency at community colleges in Wyoming.

Speakers:

Kari Brown-Herbst, Alliance Chair, Laramie County Community College

Colleen Falkenstern, WICHE

Beth Gard, Western Wyoming Community College

Lauren Schoenfeld, Wyoming Business Alliance

10:30 a.m. - 10:45 a.m.

Adjournment

10:45 a.m. - 11:00 a.m.

Break

11:00 a.m. – Noon

Optional: LCCC Campus Tour

Discover what makes Laramie County Community College a great place to learn and grow by joining us for a guided campus tour.

SPEAKERS

Keynote Speaker



Dr. Joseph Schaffer is a passionate advocate for community colleges, having experienced firsthand how an associate's degree changed his life. With over 25 years in higher education, he has served as a college CEO for 15 years, currently leading Laramie County Community College (pronounced "L-Triple-C") in Cheyenne, Wyoming. Under his leadership, LCCC has been transformed with over \$200 million in facility improvements, graduation rates increased by 106%, and celebrated record-breaking graduating classes.

Before LCCC, Dr. Schaffer spent a decade at Montana State University-Great Falls, where he became one of the youngest college CEOs in the nation at age 34. His career spans nonprofit, municipal, and private sectors, including running a successful, international Internet design and consulting company.

Nationally, he has served in leadership roles with the American Association of Community Colleges (AACC), including as board chair in 2022–23, and has contributed to organizations such as Phi Theta Kappa, Center for Community College Student Engagement, National Association for Community College Entrepreneurship, WICHE, and Northwest Commission on Colleges and Universities. Locally, he has chaired and served on economic development and business boards, including Cheyenne Leads and the Wyoming Business Council.

Dr. Schaffer frequently presents and writes on leadership, change management, rural higher education, and policy. He holds degrees from Bemidji State University, the University of Montana, and Montana Technological University. An avid outdoorsman, he enjoys hunting, fishing, and spending time with his wife, Brooke, and their daughters, Samantha and Lia.

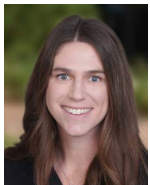
Session Speakers



Kari Brown-Herbst, Ed.D., is the senior vice president of academic affairs at Laramie County Community College (LCCC) in Cheyenne, Wyoming. As the college's chief academic officer, Brown-Herbst provides executive oversight and strategic guidance in the planning, development, and implementation of all aspects of academic programming as well as instructional support services. Brown-Herbst serves on the AACC Commission on Structured Pathways and serves the Higher Learning Commission as a member of the Peer Review Corps as well as a member of their Institutional Actions Council. Regionally, Brown-Herbst represents Wyoming's community colleges on WICHE's Alliance executive committee. She received an Ed.D. in instructional technology from the University of Wyoming, her master's in education technology from Marian University (Wisconsin), and her bachelor's in sociology with an education endorsement from Kalamazoo College (Michigan).



Ashley Duran is a transfer evaluation specialist in the office of the registrar at the University of Northern Colorado (UNC), a role she has held for over five years. In this role, she reviews transfer courses from institutions nationwide to ensure students receive accurate and fair credit toward their degrees. Duran collaborates closely with faculty, academic advisors, and partner schools to determine course equivalencies and uphold UNC's transfer policies. Her responsibilities include managing transfer equivalency databases, assisting with pathway program development, and helping students understand how their previous coursework applies to degree requirements. Duran earned her bachelor's degree in sociology with a minor in psychology from UNC.



Colleen Falkenstern serves as the director of evidence and strategic initiatives in WICHE's Policy Analysis and Research unit. In her role, she leads the unit's work on a range of postsecondary education data and research initiatives and the development of data resources to support better informed decision-making in the West. These resources include WICHE's annual collection of tuition and fees data and WICHE's quadrennial projections of high school graduates, *Knocking at the College Door*. In her time at WICHE, she has worked on projects supporting Native American-Serving Nontribal Institutions, addressing healthcare workforce issues, better alignment between higher education and workforce, and postsecondary completion. She received a bachelor's degree in marketing and management from the University of South Carolina — Columbia and a master's degree in higher education from the University of Denver.



Beth Gard is the interim vice president for academic affairs and has been at Western Wyoming Community College since 2013. She has a strong background in academic and administrative roles. She previously served as the chair of the School of Business and Computer Technology, where she spearheaded innovative initiatives that led to the introduction of Western's first bachelor's degree program and the development of stackable information technology certificates. Gard holds a bachelor of science in marketing and an master's of business administration.



Amanda Gentz, Ph.D., is a postdoctoral fellow at WICHE, where she conducts research and evaluation focused on strengthening behavioral health systems across the western United States. Her work centers on improving program effectiveness, informing policy, and supporting data-driven decision-making in regional behavioral health initiatives. Previously, she worked in research and evaluation roles within community health and academic settings, and her clinical experience includes work with traumatic stress, moral injury, and LGBTQ+ populations across various clinical settings. Gentz earned her bachelor of arts from the University of California, Santa Barbara, and her master of arts and doctorate in clinical psychology from the University of Tulsa.



Tonya Horn, Ph.D., is the director of program evaluation and research for the WICHE Behavioral Health Program. She received her master of social work and doctorate in social work from the University of Minnesota. Horn specializes in using participatory research methods to engage communities most impacted by problems to identify solutions and using data to drive behavioral health systems improvement. Prior to joining WICHE, Horn was an assistant professor at the University of St. Thomas in St. Paul, Minnesota, where she led the development of new workforce training programs in integrated behavioral health care and co-occurring disorder treatment.



Louisa Hunkerstorm is a senior associate at the National Center for Higher Education Management Systems (NCHEMS), where she has worked since 2022. At NCHEMS, she works on research projects related to higher education strategic planning, governance and structure, and finance; she was one of the primary authors of AACC's 2025 *Resilient By Design* report. Previously, Hunkerstorm served as the director of institutional effectiveness at Central Wyoming College where she led the college's strategic planning, institutional research, and accreditation functions. Hunkerstorm received a bachelor of arts in comparative literature from Dartmouth College and a master of arts in communication from the University of Washington. She lives in Lander, Wyoming.



Amardeep Kahlon, Ph.D., has served as vice president of education & learning at Central New Mexico Community College (CNM) since January 2024. In this role, she provides strategic leadership and oversight for all academic programs and processes. Prior to joining CNM, she was the vice president of academic affairs at Paradise Valley Community College in Arizona. In addition to her responsibilities at CNM, she serves on the Board of Directors for the National Council for Workforce Education. Kahlon holds a Master's in computer science from Binghamton University and a Doctorate in educational leadership from The University of Texas at Austin.



Meghan Kelly is the associate dean for the library and learning commons at Laramie County Community College. She is passionate about connecting faculty and students with information that supports learning and has led statewide collaborations to expand access to resources. A strong advocate for user-centered services, she co-led the Guided Pathways meta majors initiative and the Unlocking Opportunity redesign of the college success course. She has worked in libraries in a variety of positions including events, technical services, teaching, and management and over 20 years in higher education. She holds an master of library and information science from the University of Texas at Austin.



Patrick Lane, Ph.D., is the vice president of WICHE's Policy Analysis and Research unit. In this role, he oversees a range of work focused on improving access to and excellence in postsecondary education through sound public policy and research. This portfolio of work includes efforts to improve the value of postsecondary education, address students' behavioral health needs,

increase affordability, and ensure robust regional collaboration. He previously was WICHE's director of data initiatives leading efforts to improve linkages between state data systems. Prior to this role, he coordinated WICHE's efforts on adult learners and improving postsecondary access for low-income students. He came to WICHE after spending several years working in education policy in the Republic of the Marshall Islands. Lane completed a doctorate in public affairs at the University of Colorado Denver in 2015.



Abigail Loya is an instrumentation instructor and chair of the Industrial Technology & Workforce Development department at Great Basin College. She teaches the in-person Instrumentation program and its new hybrid format, combining online and hands-on instruction to support working students and expand access. She previously spent nine years as an electrical and instrumentation technician in gold mining. Passionate about education and workforce development, she builds strong technical programs that prepare students for careers in electrical, instrumentation, and automation fields. She holds a bachelor of applied science in instrumentation technology and an associate of applied science in electrical systems technology from Great Basin College.



Stacy Maestas, MSM, has served Laramie County Community College (LCCC) in Cheyenne, Wyoming, since 2004, and as registrar since 2009. She oversees day-to-day operations within the Office of the Registrar, serves on multiple cross-functional committees on campus and within the state; she is integrally involved in curriculum and program development, new technology implementations, and process improvement initiatives. Maestas received a bachelor of arts in leadership and a master's of science in management from Bellevue University. She is also an adjunct instructor at LCCC and a graduate of the American Association of Collegiate Registrars and Admissions Officers Strategic Enrollment Management Endorsement Program.



Trent Morrell is the STEM pathway coordinator at Laramie County Community College and has been a faculty member since 2004. He is the instructor of the first-year seminar and transition experience courses in STEM where he provides mentorship and career exploration opportunities for students. He has taught geoscience classes, including a geology field course in Yellowstone and Grand Teton National Parks, and developed a mobile science lab which brings hands-on science to local schools and the community. Morrell holds a bachelor of arts in geography/land use planning from Augustana College (Illinois), and master of arts in geography from Western Illinois University.



Sarah Negrete, Ph.D., has served as vice president for academic affairs at Great Basin College since 2024. She provides strategic leadership for academic programs, faculty, curriculum, and instructional services to ensure educational quality, student success, and alignment with the college's mission and accreditation standards. Previously, she spent 10 years as director of professional learning in northeastern Nevada and has served as a tenured professor. She has published and presented nationally on literacy, leadership, and professional learning. She holds a bachelor of arts from Montana State University Billings and a doctorate from the University of Nevada, Reno.



Lauren Schoenfeld is the executive director of the Wyoming Innovation Partnership at the Wyoming Business Alliance. She was appointed by Gov. Mark Gordon as the first Wyoming Innovation Partnership Executive Director and also served as senior policy advisor in economic development, broadband, and business support. Schoenfeld served as a county commissioner for four years and her previous experience includes nonprofit executive leadership as the executive director for the YWCA of Sweetwater County and organizational change management lead for J.R. Simplot Company. She served as an appointee on the Wyoming Broadband Council and to the Wyoming Broadband Legislative Task Force. In 2018, she was honored to be a delegate and speaker at the United Nations Commission on the Status of Women.



David Stoddard, Ed.D., has served as dean of the School of Industrial Technology and Workforce Development at Great Basin College since 2024. He has created a vision for hybrid programming in career and technical education as means of access for working adults. Previously, Stoddard served as director of technical and apprenticeship programs, campus director, director of career services, and director of community and corporate relations at various institutions. Stoddard received his bachelor of science in speech communication from the University of Utah, a master of professional communication from Westminster University, and a doctor of education in higher education leadership from Maryville University of St. Louis.



Maggie Swanger has served as the electronic resources librarian at Laramie County Community College for 20 years. She is a passionate advocate for open educational resources (OER) and started the college's OER task force as a grassroots effort in 2020. In addition to managing the library's electronic collections and providing students with research instruction, she also teaches geology classes. Swanger received her bachelor of science in geosciences from the University of Oregon and an master of arts in library and information science from the University of Arizona.



Olivia Tufo is the manager of regional collaborative procurement solutions for the Western Interstate Commission for Higher Education (WICHE). In her work, she collaborates with WICHE's sister compacts to coordinate, socialize, and optimize a multi-compact procurement initiative in the West. Tufo also supports projects within WICHE's Programs and Services unit, which broadens student access to postsecondary education and fosters higher education collaborations that increase institutional effectiveness. Tufo is involved in multiple communities of practice and grant-funded initiatives focused on administrative holds, transfer, credit mobility, and rural needs.

— 2026 Bernice Joseph Leadership Award —
CONGRATULATIONS TO
Dr. Phil Lister and Angie Alley
Central New Mexico Community College

2026 Bernice Joseph Leadership Award, Honorable Mentions

ALICIA UHDE

Bismarck State College

SHERIDAN HANSON

LAURA SIGSBURY

JOSH THEIN

Laramie County Community College

LOCAL ATTRACTIONS

- ▶ [The Historic Atlas Theatre](#) – The Historic Atlas Theatre is owned and operated by Cheyenne Little Theatre. Home to the annual Old Fashioned Melodrama every summer, the building is also used for touring acts, private events, and other theatrical productions throughout the year.
- ▶ [Eight-Foot-Tall Cowboy Boots](#) – There have been multiple eight-foot-tall cowboy boots that have been carefully painted by local artists to show the history of Cheyenne and Wyoming. Go on a scavenger hunt and find them all!
- ▶ [Board & Brush Creative Studio](#) – The goal at this wonderful studio is to turn you into a “DIY master” by educating guests to understand and appreciate the beauty of raw materials — the wood, the knots, the color variations and the simple imperfections that will make everyone’s project unique.
- ▶ [Blue Raven Brewery](#) – In downtown Cheyenne, Wyoming in the Corson House historical home. Stop by and enjoy a pint of craft beer on their patio or inside their historic tasting room.
- ▶ [The Metropolitan Downtown](#) – A classic menu with elevated service and polished casual atmosphere, the Metropolitan Downtown invites you to enjoy innovative twists on comfortable classics, exceptional wines, and creative cocktails.



New Advanced Placement® Courses Launching Fall 2026

AP® Business with Personal Finance is a yearlong course that aligns closely with a college-level introduction to business course.

AP Cybersecurity offers a broad introduction to the field and aligns closely with a college-level, introductory cybersecurity course.

Each course is part of the AP Career Kickstart™ group of courses. For more information on these new courses, visit: apcentral.collegeboard.org

Scores from these two new exams will begin arriving on your campus in early July 2027.

Would you like to share your policy with us so we can better direct students to you?

Contact us: aphighered@collegeboard.org

© 2026 College Board. APD-923

Endorsed by



Faculty Development That Transforms Teaching and Learning



ACUE-certified faculty deliver exceptional teaching in every class.

- **600+** Partner Institutions
- **22K+** ACUE-Certified Faculty
- **610k+** Practices Implemented
- **92%** Faculty Recommend ACUE



HOSTS AND SPONSORS

Special appreciation goes to our host:



And to our sponsors:

— CREST LEVEL —



— BASE LEVEL —

AGB
SEARCH

Advancing Higher Education Leadership

Additional support provided by:



ALLIANCE EXECUTIVE COMMITTEE

Arizona

Vacant

California

James Todd, California Community Colleges
Chancellor's Office

Colorado

Sarah Heath, Colorado Community College
System

Hawai'i

Kahele Dukelow, University of Hawai'i
System

Idaho

Angela Sackett, College of Eastern Idaho

Montana

Angela DeWolf King, Montana University
System

Nevada

Melissa Deadmond, Truckee Meadows
Community College

New Mexico

Amardeep Kahlon, Central New Mexico
Community College

North Dakota

Kaylyn Bondy, Bismarck State College

Oregon

Donna Lewelling, Oregon Higher Education
Coordinating Commission

South Dakota

Tiffany Howe, Western Dakota Technical
College

Utah

Jason Pickavance, Salt Lake Community
College

Washington

Joyce Hammer, Washington State Board for
Community and Technical Colleges

Wyoming

Kari Brown-Herbst, Laramie County
Community College

SAVE THE DATE

Join us for the 2027 Academic Partnerships Annual Meeting

April 14–16, 2027 • Denver, CO • Metropolitan State University



Learn more at:



Photo: Tivoli Brewing Co. Tap House, Auraria Pkwy, Denver by David. CC BY 2.0.

CONTACT US



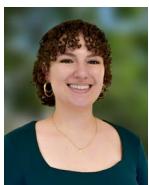
Nicholas Fuselier

Director, Academic Partnerships, Learning, and Development
nfuselier@wiche.edu



Kay Hulstrom

Associate Director, Operations and Program Implementation
khulstrom@wiche.edu



Onnika Hanson-White

Administrative Assistant III
ohwhite@wiche.edu