

THE WICHE BEHAVIORAL HEALTH PROGRAM'S

CURRENT PROJECTS LIST

Presented by Vice President for Behavioral Health, Dennis Mohatt



March 2025

ALASKA • ARIZONA • CALIFORNIA • COLORADO • HAWAII
IDAHO • MONTANA • NEVADA • NEW MEXICO • NORTH DAKOTA • OREGON
SOUTH DAKOTA • U.S. PACIFIC TERRITORIES AND FREELY ASSOCIATED STATES
UTAH WASHINGTON • WYOMING

INTRODUCTION



Spearfish, South Dakota

01 Introduction

The WICHE Behavioral Health Program, founded in 1955, improves behavioral health systems of care for mental health consumers and their families in the West and beyond.

02 State Programs

We work to advance the preparation of a qualified mental health workforce in the West. Collaborating with states and territories, we meet the challenges of changing environments through regional research and evaluation, policy analysis, program development, technical assistance, and information sharing.

12 Multistate Projects

18 Our Staff

wiche.edu/behavioral-health



Anchorage, Alaska

Alaska Psychology Internship Consortium (AK-PIC)

The WICHE BHP contracts with the Alaska Department of Health and Social Services (DHSS), Division of Behavioral Health and the Alaska Mental Health Trust Authority to support the Alaska Psychology Internship Consortium (AK-PIC) to complete the training of psychology doctoral students who wish to train and work in Alaska. The WICHE BHP ensures the program meets American Psychological Association (APA) accreditation standards, provides large-scale administrative support to the program, and supplies technical assistance.

PROJECT LEAD: KARLY DICKINSON

ak-pic.org

Native American Research Centers for Health (NARCH)

The WICHE BHP, in collaboration with the Northwest Indian College, the Center for Alaska Native Health Research at the University of Alaska Fairbanks, and the Alaska Native Tribal Health Consortium continue their work on the National Institutes of Health (NIH) research grant to describe and evaluate the Alaska Native Tribal Health Consortium's innovative approach to training behavioral health aides (BHA). The program provides culturally relevant training and education to village-based counselors, increasing the workforce in remote areas. This three phase research project will support the long-term goal of gathering evidence on the effectiveness of the ANTHC's BHA program in building local capacity for place-based behavioral health services in rural and remote American Indian and Alaska Native community settings.

PROJECT LEAD: TONYA HORN

Alaska Psychiatric Institute (API) – Regulatory Compliance

The WICHE BHP was selected through a competitive bidding process to assist the Alaska Psychiatric Institute (API) in maintaining compliance with regulating agencies through review of policies, health information management, infection control, milieu management, risk management, medical staff credentialing, pharmacy practices, and life safety code and environment of care. The BHP supports API in maintaining compliance with regulating agencies (The Joint Commission & Centers for Medicare & Medicaid Services) through regular verbal and written correspondence, written reports, virtual meetings, and onsite reviews and provides consultation on how to address shortcomings in policies and their execution.

PROJECT LEAD: DEBRA KUPFER

ARIZONA



Scottsdale, Arizona

Arizona Evidence-Based Practices (EBPs) Fidelity Monitoring

The WICHE BHP Fidelity Review Program partners with the Arizona Health Care Cost Containment System to conduct fidelity reviews of programs providing four SAMHSA evidence-based practices throughout the state of Arizona, including Assertive Community Treatment (ACT), Permanent Supportive Housing (PSH), Consumer Operated Services (COS), and Supported Employment (SE).

PROJECT LEAD: ANNETTE ROBERTSON

Mercy Care Arizona Community Action Resources Education and Service (C.A.R.E.S.) Training

The WICHE BHP receives funding from Mercy C.A.R.E.S., a community reinvestment program, which stands for Community Action Resources Education and Service. The current grant funding supports the expansion of competence and evidence-based practices in trauma informed treatment.

PROJECT LEAD: DEBRA KUPFER

Avondale Elementary School District Re-Accreditation Technical Assistance

The WICHE BHP is supporting the Avondale Elementary School District's re-accreditation of their Doctoral School Psychology Internship Program by providing technical assistance in their submission of re-accreditation to the American Psychological Association.

PROJECT LEAD: TODD HELVIG



Crested Butte, Colorado

Colorado Crisis Professional Curriculum - Technical Assistance

The WICHE BHP received a contract from the State of Colorado BHA to support a large workforce development project to enhance skills and knowledge of crisis responders when working with individuals with behavioral health needs throughout the State. Phase 1 of the project, completed in 2024, involved supporting the development of the Crisis Professional Curriculum. Phase 2 is intended to enhance crisis response for 1) youth and young adults working as peers, and 2) first responders. The WICHE BHP is responsible for conducting focus groups with each of these groups to determine training topics and learner needs, develop design specifications to meet those needs, and develop training and support materials targeting the needs of each group. The WICHE BHP provided program management, subject matter expertise, administrative support, and access to instructional design and development to create the Crisis Professional Curriculum and continues to support Phase 2 through access to instructional design and development.

PROJECT LEAD: GINA BRIMNER

Rural Behavioral Health Initiative

The Colorado Behavioral Health Administration (BHA) contracted with WICHE to increase access to behavioral health support and services for older adults living in rural Colorado. The goal of this project is to increase touch points in which those who need services can be identified and linked to appropriate care. Peer Support Specialists have a unique capacity to increase engagement of individuals with severe and persistent behavioral health conditions. Currently, there is limited access to training for Peer Support Specialists. This project will offer training opportunities for Peer Support Specialists across the State.

PROJECT LEAD: TODD HELVIG

PACIFIC JURISDICTIONS



Guam

Guam Psychology Internship Consortium (Guam-PIC)

The WICHE BHP is working with the Guam Behavioral Health and Wellness Center (GBHWC) to facilitate development of a Doctoral Psychology Internship Program to support the preparation and retention of doctoral-level psychologists in Guam. The WICHE BHP ensures the program meets the accreditation requirements of the American Psychological Association (APA), provides technical assistance, and supports the internship program through the accreditation process.

PROJECT LEAD: DENNIS MOHATT

guam-pic.org

Commonwealth of the Northern Mariana Islands Behavioral Health Administration

The WICHE BHP is working with the Guam Behavioral Health and Wellness Center (GBHWC) to facilitate development of a Doctoral Psychology Internship Program to support the preparation and retention of doctoral-level psychologists in Guam. The WICHE BHP ensures the program meets the accreditation requirements of the American Psychological Association (APA), provides technical assistance, and supports the internship program through the accreditation process.

PROJECT LEAD: TODD HELVIG



Kapa'a, Hawai'i

Hawai'i Psychology Internship Consortium (HI-PIC)

The WICHE BHP partners with the Hawai'i Department of Education, Hawai'i Department of Health, and Hawai'i Department of Public Safety to assist in the operation and continuous accreditation of its psychology internship consortium. A primary goal of the internship is to increase the number of psychologists in Hawai'i and build the state's behavioral health workforce. The WICHE BHP supports the ongoing development and operations of the Hawai'i Internship Program (HI-PIC) through technical assistance and large-scale administrative support.

PROJECT LEAD: ASHLEY FORTIER

hi-pic.org

Hawai'i Department of Education: Recruitment for School-Based Behavioral Health Professionals

The WICHE Behavioral Health Program (WICHE BHP) assists the Hawai'i Department of Education by providing marketing, recruitment, screening, and referral services to fill vacancies for school-based behavioral health (SBBH) and social work professionals in public schools across the Hawaiian Islands. This initiative aims to enhance the recruitment and retention of qualified SBBH and social work professionals, ensuring that schools are equipped to meet the behavioral health and social service needs of students statewide.

PROJECT LEAD: MARGIE DEANDA

Hawai'i Department of Education: Recruitment of Clinical Psychologists Project

The Hawai'i Department of Education has contracted with the WICHE Behavioral Health Program (WICHE BHP) to address critical staffing shortages for the West Hawai'i School-Based Behavioral Health (WH-SBBH) program. Under this contract, the WICHE BHP recruits Clinical Psychologist consultants to provide essential supervision, training, and support to staff and students. This initiative aims to overcome longstanding recruitment and retention workforce challenges tied to the rural nature of the region and bolster the WH-SBBH program's ability to meet the behavioral health needs of the community.

PROJECT LEAD: MARGIE DEANDA

Hawai'i Early Intervention Services - Rates Study

The Early Intervention Services Section (EIS) of the Hawai'i Department of Health contracted with the WICHE BHP to complete another comparative review of early childhood services compensation methodology and pricing structures for both contracted services and related professional salaries such as General Educator, Occupational and Physical Therapies, and Speech Language Pathologist. The EIS wishes to compare Hawai'i rates to those in other, analogous states to ensure competitive pay to help maintain a sufficient workforce.

PROJECT LEAD: TONYA HORN

IDAHO



Shoshone Falls Park, Twin Falls, Idaho

MONTANA



Glacier National Park, Montana

Idaho Psychology Internship Consortium (ID-PIC)

The WICHE BHP is working with partner agencies at Boise State University, Full Circle Health/Family Medicine Residency of Idaho, Idaho State University Family Medicine Residency/Counseling and Mental Health Center, State Hospital South, and Pearl Health Clinic to develop a broad training program to support the preparation and retention of doctoral-level psychologists in Idaho through the Idaho Psychology Internship Consortium (ID-PIC). The WICHE BHP facilitates program development, ensures the program meets American Psychological Association (APA) accreditation standards, and provides technical assistance.

PROJECT LEAD: KARLY DICKINSON

idaho-pic.org

Montana Program for Assertive Community Treatment (PACT) Fidelity Reviews

The WICHE BHP Fidelity Review Program provides consultation and technical assistance to the Montana Department of Health and Human Services, Behavioral Health & Developmental Disabilities Division (BHDD) regarding the implementation of their Program for Assertive Community Treatment (PACT). The Fidelity Review team also conducts fidelity assessments of PACT programs in Montana using a modified tool that is based on the SAMHSA evidence-based practice of Assertive Community Treatment (ACT).

PROJECT LEAD: ANNETTE ROBERTSON

NEVADA

NEW MEXICO



Red Rocks, Nevada



Abiquiu, New Mexico

Nevada Psychology Internship Consortium (NV-PIC)

The WICHE BHP provides support to the Nevada Division of Public and Behavioral Health for the ongoing operations and accreditation of the Nevada Psychology Internship Consortium (NV-PIC) which aims to increase the number of psychologists in Nevada and build the state's behavioral health workforce. The WICHE BHP provides ongoing technical and administrative assistance to the program.

PROJECT LEAD: TODD HELVIG

nv-pic.org

New Mexico Psychology Internship Consortium (NM-PIC)

The WICHE BHP contracts with the State of New Mexico to provide consultation and technical assistance to develop and implement a Doctoral Psychology Internship Consortium. The WICHE BHP focuses on facilitating the development of the program, ensuring that the internship program meets the accreditation requirements of the American Psychological Association (APA), and providing administrative support.

PROJECT LEAD: TODD HELVIG

nm-pic.org

N. DAKOTA

OREGON



Watford City, North Dakota



Cannon Beach, Oregon

Sanford Health Psychology Internship Consortium (SH-PIC)

The WICHE BHP, along with the leadership of Sanford Health, provide a broad training program to support the preparation and retention of doctoral level psychologists in North Dakota and Minnesota. The WICHE BHP ensures the program meets the accreditation requirements of the American Psychological Association (APA), provides technical assistance, and supports the internship program administratively.

PROJECT LEAD: ASHLEY FORTIER

sh-pic.org

Oregon State Hospital Psychology Internship Program (OSH-PIP)

The WICHE BHP continues to assist the Oregon State Hospital Psychology Internship Training Program by providing support for the internship website.

PROJECT LEAD: TODD HELVIG

oshpip.org

SOUTH DAKOTA



Interior, South Dakota

South Dakota Psychology Internship Consortium (SD-PIC)

The WICHE BHP partners with The Human Services Center (HSC) and Lewis and Clark Behavioral Health Services (LCBHS) to develop the South Dakota Psychology Internship Consortium (SD-PIC). The WICHE BHP ensures the program meets the accreditation requirements of the American Psychological Association (APA), provides technical assistance, and supports the internship program through the accreditation process.

PROJECT LEAD: KARLY DICKINSON

sd-pic.org

South Dakota Individualized Mobile Programs of Assertive Community Treatment (IMPACT) Fidelity Reviews and Training

The WICHE BHP Fidelity Review Program consultation and technical assistance to the South Dakota Division of Behavioral Health regarding the implementation of their Individualized Mobile Programs of Assertive Community Treatment (IMPACT). This work includes conducting quality assurance reviews of IMPACT programs using a modified tool that is based on the SAMHSA evidence-based practice of Assertive Community Treatment (ACT) as well as ongoing technical assistance to IMPACT teams on the delivery of services.

PROJECT LEAD: ANNETTE ROBERTSON

UTAH

WASHINGTON



Canyonlands National Park, Utah



Rainier, Washington

Utah Psychology Internship Consortium (UT-PIC)

With support from the Utah Medical Education Council, the WICHE BHP worked with partner agencies to develop a broad and culturally relevant training program to support the preparation and retention of doctoral-level psychologists in Utah. Currently, the WICHE BHP is providing consulting services to the Utah Psychology Internship Consortium to assist them in their re-accreditation process and completing their self-study in preparation for their APA accreditation site visit.

PROJECT LEAD: TODD HELVIG

ut-pic.org

Washington Health Care Authority Digital Behavioral Health Project

The Washington Health Care Authority (HCA) contracted with the WICHE BHP to assist the HCA Division of Behavioral Health and Rehabilitation's Prenatal – 25 Program with implementing a budget proviso which seeks to identify digital behavioral health technologies appropriate for youth and young adults. Under Budget Proviso 134, the HCA must issue a Request for Information and establish an expert panel to identify appropriate “digital behavioral health prevention, intervention, treatment, and recovery support services” for youth and young adults. WICHE provides project management, administrative support, and subject matter expertise to support this project.

PROJECT LEAD: GINA BRIMNER

MULTI-STATE PROJECTS



Bixby Creek Bridge, California

Fidelity Review Program

The BHP provides consultation, training, and technical assistance to support Western states in their implementation of evidence-based practices (EBPs) and continuous quality improvement efforts. The Fidelity Review Program conducts independent evaluation and fidelity/quality assurance reviews of the following EBPs: Assertive Community Treatment (ACT), including Forensic ACT (FACT), Permanent Supportive Housing (PSH), Supported Employment (SE), and Consumer Operated Services (COS). The BHP also specializes in adapting EBPs for implementation in rural and remote communities, including development of state-specific fidelity and quality assurance review tools with criteria that are relevant to rural contexts.

PROJECT LEAD: TONYA HORN

Rural Communities Opioid Response Program (RCORP)

JBS International received a Cooperative Agreement from the Health Resources & Services Administration (HRSA) to support the RCORP - Technical Assistance Project. The WICHE BHP serves as the Technical Assistance Lead for 57 grants to strengthen rural organizations' capacity to develop multi-section consortia that can plan, implement, and sustain programs that improve access to and quality of behavioral health care services, including services for individuals with substance use and opioid use disorders. This project supports grantees in reducing morbidity and mortality associated with opioid and/or psychostimulant use in their communities, using evidence-based and sustainable interventions. The current grantee sites supported by the WICHE BHP are in the following WICHE States: Arizona, California, Colorado, Commonwealth of the Northern Mariana Islands, Montana, Nevada, New Mexico, North Dakota, Oregon, Utah, and Washington, in addition to 17 other states.

PROJECT LEAD: DEBRA KUPFER

MULTI-STATE PROJECTS



Hawai'i

Rural Veterans Suicide Prevention Program - Together With Veterans

Together With Veterans (TWV) is funded by the US Department of Veterans Affairs Office of Rural Health, with support from the Office of Mental Health and Suicide Prevention. The TWV program is a partnership of the VA Rocky Mountain Mental Illness Research, Education and Clinical Center (MIRECC), the WICHE BHP, and local community organizations that are run by or are involved with serving veterans. The WICHE BHP engages rural communities via local veterans and community partners, including health care, behavioral health, law enforcement, gun shops, the faith community, and others as identified locally to implement the evidence-informed suicide prevention strategies. The WICHE BHP provides training and technical assistance to rural sites across the country interested in pursuing this local veteran-driven, collaborative, evidence-informed approach to assessing community needs and creating a community-centered action plan grounded in the public health model for suicide prevention. TWV practices are in alignment with the VA National Strategy for Preventing Veteran Suicide, and the SAMHSA/VA partnership implemented via the Governor's Challenge and Mayor's Challenge to Prevent Suicide among Service Members, Veterans and their Families. States and U.S. Territories with TWV community sites include: Alaska, Arizona, Arkansas, California, Colorado, Guam, Hawai'i, Illinois, Kansas, Michigan, Minnesota, Mississippi, Montana, Nevada, New Hampshire, New Mexico, North Carolina, North Dakota, Oklahoma, Oregon, Pennsylvania, Texas, Virginia, West Virginia, and Wisconsin. New recruitment is currently underway in additional states across the WICHE Region.

PROJECT LEAD: JASON ALVES

mirecc.va.gov/visn19/togetherwithveterans



Orem, Utah

The Rural Opioid Technical Assistance Regional Centers (ROTA-R)

The WICHE BHP, under a grant from the Substance Abuse and Mental Health Services Administration (SAMHSA), operates the Mountain Plains Rural Opioid Technical Assistance Center (Mountain Plains ROTAC). Mountain Plains ROTAC provides publicly accessible training and technical assistance to address the misuse of opiates and stimulants across the behavioral health continuum of care in HHS Region 8, covering Colorado, Utah, Wyoming, South Dakota, North Dakota, and Montana. Through training, webinars on evidence-based practices, supporting a Regional Advisory Workgroup, and providing robust Community of Practice learning opportunities, Mountain Plains ROTAC aims to reach populations in rural, tribal, and frontier communities to reduce morbidity and mortality associated with opioid and/or stimulant use in rural communities.

PROJECT LEAD: BOBBI PERKINS

Rural Communities Opioid Response Program (RCORP)

JBS International received a Cooperative Agreement from the Health Resources & Services Administration (HRSA) to support the RCORP - Technical Assistance Project. The WICHE BHP serves as the Technical Assistance Lead for 57 grants to strengthen rural organizations' capacity to develop multi-section consortia that can plan, implement, and sustain programs that improve access to and quality of behavioral health care services, including services for individuals with substance use and opioid use disorders. This project supports grantees in reducing morbidity and mortality associated with opioid and/or psychostimulant use in their communities, using evidence-based and sustainable interventions. The current grantee sites supported by the WICHE BHP are in the following WICHE States: Arizona, California, Colorado, Commonwealth of the Northern Mariana Islands, Montana, Nevada, New Mexico, North Dakota, Oregon, Utah, and Washington, in addition to 17 other states.

PROJECT LEAD: DEBRA KUPFER

MULTI-STATE PROJECTS



Moapa Valley, Nevada

Suicide Prevention Toolkit

The WICHE BHP continues to provide training and support in the use of the Suicide Prevention Toolkit for Primary Care Providers. Originally developed in 2009 with a grant from the Health Resources and Services Administration (HRSA), the toolkit was revised and updated in 2017 to reflect current epidemiological information and align with Zero Suicide, a national best practice framework for suicide prevention. The WICHE BHP continues to provide training through webinars and on-site visits on how to use and implement the Toolkit.

PROJECT LEAD: DENNIS MOHATT

University of Wisconsin Technical Assistance

The University of Wisconsin contracted with the WICHE BHP as a lead agency to provide training to a pre-determined Learning Collaborative. The training consisted of six remote sessions over 12 weeks educating students, educators, and paraprofessionals on the integration of behavioral health in rural communities.

PROJECT LEAD: TODD HELVIG AND ASHLEY FORTIER



Mosier, Oregon

Western States Decision Support Group – Annual Membership Program

Since 1985, the Western States Decision Support Group (WSDSG) has served as an information-sharing network and collaboration group for behavioral health data and evaluation staff and managers from WICHE states and territories. WSDSG members participate in quarterly conference calls to discuss emerging issues in behavioral health data collection, reporting, and system evaluation. The BHP also organizes an annual meeting with training and presentations for WSDSG members to stay apprised of developments and best practices in the field of behavioral health data and evaluation. A Steering Committee of WSDSG members provides leadership for planning WSDSG activities. Additionally, Work Groups provide opportunities for targeted collaboration and collective action in response to emergent and timely issues in behavioral health data collection and reporting. Funding is based on an annual membership fee.

PROJECT LEAD: TONYA HORN

Pacific Behavioral Health Collaborating Council

WICHE BHP has been working with the Pacific Behavioral Health Collaborating Council (through a TTI grant from NASMHPD) to incorporate and adopt the necessary policies and procedures to provide oversight of a Behavioral Health Aid (BHA) program. This program aims to be consistent with the BHA program developed through the Alaskan Native Tribal Health Consortium (ANTHC) with adaptation to island-based behavioral healthcare. Upon adoption, CNMI will work with the ANTHC training system and WICHE BHP to implement the BHA program.

PROJECT LEAD: TODD HELVIG

MULTI-STATE PROJECTS



Healy, Alaska

Mental Health Dissemination, Implementation, and Sustainment (MHDIS) Center for HHS Regions 6 & 8

WICHE BHP serves as a sub-awardee to the University of Texas-Austin providing technical assistance to SAMHSA grantees across two Health Human Services Regions. During this inaugural year for the MHDIS Center, WICHE will assist in establishing the advisory board and assessing technical assistance desired by grantees and optimal method for assistance.

PROJECT LEAD: DENNIS MOHATT

OUR STAFF



JASON ALVES

Director of
Veterans
Initiatives



**GENEVIEVE
BERRY**

Project Manager



GINA BRIMMER

Director of
Special Projects



**MADISON
CHAMBERLAIN**

Fidelity Specialist



**KRISTY
CRAWFORD**

Fidelity Specialist



JANELL DALY

Senior
Administrative
Coordinator



**MARGIE
DeANDA**

Administrative
Assistant II



**KARLY
DICKINSON**

Technical
Assistance
Associate -
Psychologist



**MADISON
DUPRE**

Administrative
Assistant III



NICOLE EASTIN

Fidelity Specialist



**ASHLEY
FORTIER**

Technical
Assistance
Lead -
Psychologist



**CAITLYN
GRUBB**

Program
Evaluation &
Research
Coordinator



**ANDIE
HANCOCK**

Budget
Coordinator



TODD HELVIG

Director of
Education &
Training



TONYA HORN

Director of
Program
Evaluation &
Research



**MAH JACOBS-
BRICHFORD**

Fidelity Specialist



DEBRA KUPFER

Senior
Consultant



**ANDREW
MARTINEZ**

Director of
Operations



**DENNIS
MOHATT**

Vice President



**CAMELIA
NARANJO**

Veterans
Initiatives
Program
Manager



**MIKAYLA
NELSON**

Administrative
Assistant III



BOBBI PERKINS

Director,
Technical
Assistance Lead



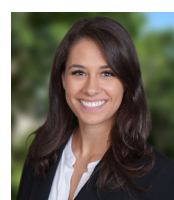
**MELISSA
PORPHIR**

Fidelity Specialist



**ANNETTE
ROBERTSON**

Fidelity Review
Program Manager



VANESSA ROUP

Technical
Assistance
Associate



**FLORA
SHIRZADIAN**

Data
Specialist



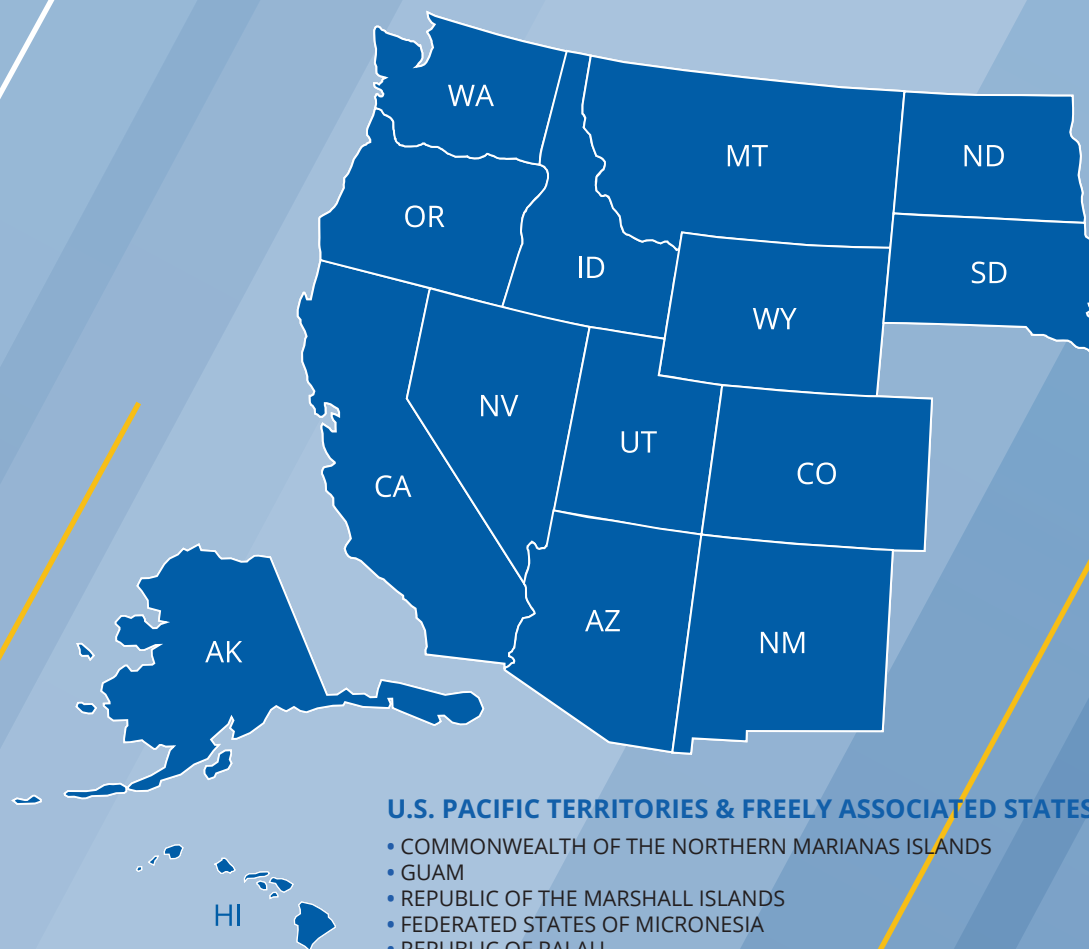
ALLISON TREU

Fidelity Specialist



IVORY TUBBS

Technical Expert
Lead



U.S. PACIFIC TERRITORIES & FREELY ASSOCIATED STATES

- COMMONWEALTH OF THE NORTHERN MARIANAS ISLANDS
- GUAM
- REPUBLIC OF THE MARSHALL ISLANDS
- FEDERATED STATES OF MICRONESIA
- REPUBLIC OF PALAU



Western Interstate Commission for Higher Education

WESTERN INTERSTATE COMMISSION FOR HIGHER EDUCATION

3035 Center Green Drive, Suite 200
Boulder, CO 80301

303.541.0311 | [WICHE.EDU/BEHAVIORAL-HEALTH](https://www.wiche.edu/behavioral-health)