

## 2022-23 ACADEMIC YEAR

**\$13.4M**  
**TOTAL SAVED**

by Utah students  
in AY 2022 through WICHE  
Student Access Programs

**\$9.18M**  
**SAVED**  
through WUE  
AY 2022

**\$3.64M**  
**SAVED**  
through WRGP  
AY 2022

**\$583,700**  
**SAVED**  
through PSEP  
AY 2022

## WESTERN UNDERGRADUATE EXCHANGE



Saves **UNDERGRADUATE** students on out-of-state tuition. They pay no more than 150% of in-state tuition at partner institutions across the West.

Top out-of-state WUE schools for Utah undergraduate students:

- ▶ Mohave Community College (162)
- ▶ Colorado Mesa University (63)
- ▶ Western Wyoming Community College (60)

Top Utah WUE schools for out-of-state undergraduate students:

- ▶ University of Utah (2,318)
- ▶ Utah Valley University (787)
- ▶ Southern Utah University (450)

## WESTERN REGIONAL GRADUATE PROGRAM



Saves students on out-of-state **GRADUATE** certificate, master's, and doctoral programs. They pay no more than 150% of in-state tuition at partner institutions across the West.

Top out-of-state WRGP schools for Utah graduate students:

- ▶ University of Idaho (42)
- ▶ University of Colorado Denver (28)
- ▶ Idaho State University (28)

Top Utah WRGP schools for out-of-state graduate students:

- ▶ University of Utah (169)
- ▶ Utah State University (28)
- ▶ Utah Valley University (9)

## PROFESSIONAL STUDENT EXCHANGE PROGRAM



Helps students pursuing careers in **10 HEALTH FIELDS**. They can enroll in programs in the WICHE region and receive substantial tuition support from their home state/territory.

**31 Utah students paid reduced tuition** for healthcare studies not offered by public institutions in their home state.

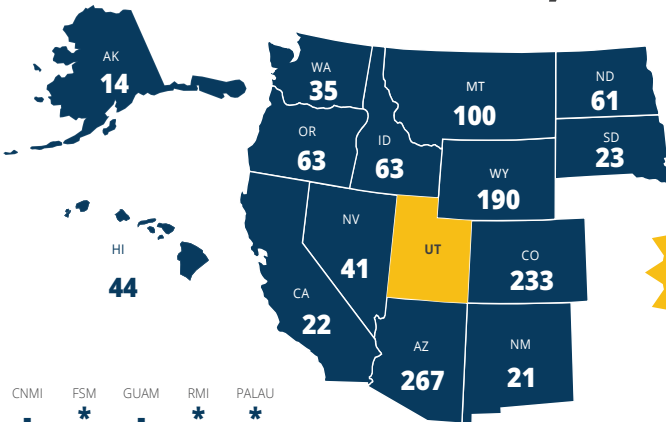
**49% of Utah's PSEP graduates returned home to practice** (2012–21). Students are not contractually required to return.

**Utah institutions and their local economies benefit, too.** This year, 30 PSEP students enrolled in programs located in Utah. Institutions received \$807,125 in support fees to reduce the students' tuition costs.

# 1,805% ROI gained on Utah's WICHE membership dues (\$159,000/FY 2023)

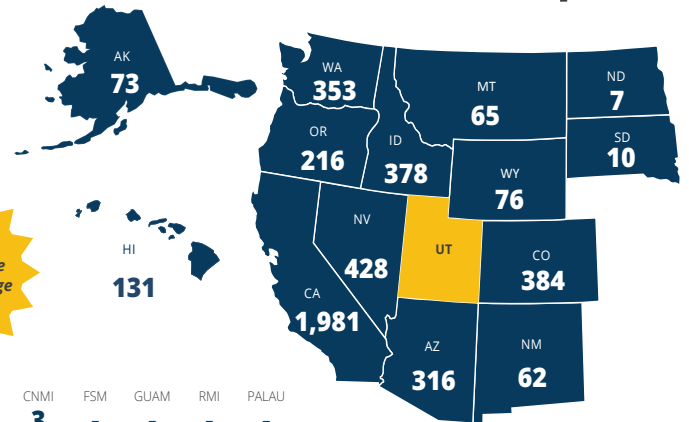
## WUE

WUE STUDENTS FROM UTAH: **1,177**



4,483 WUE students chose to attend college in Utah

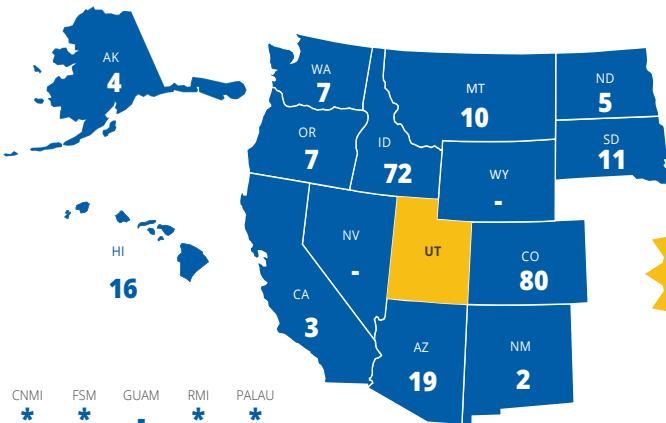
WUE STUDENTS TO UTAH: **4,483**



\* Currently do not have any participating WUE schools.

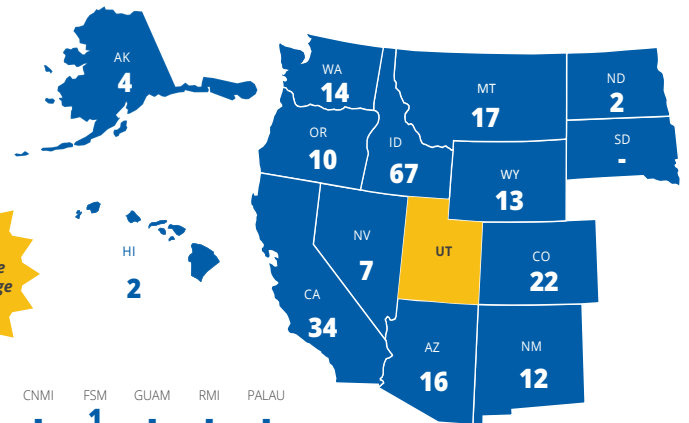
## WRGP

WRGP STUDENTS FROM UTAH: **236**



221 WRGP students chose to attend college in Utah

WRGP STUDENTS TO UTAH: **221**



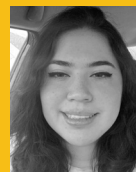
\* Currently do not have any participating WRGP schools.

## PSEP

FIELD	STUDENTS ENROLLED	SUPPORT FEES PAID
Optometry	21	\$413,700
Podiatry	10	\$170,000
<b>TOTAL</b>	<b>31</b>	<b>\$583,700</b>

PSEP students from Utah saved \$583,700 in tuition ↗

## WHAT STUDENTS ARE SAYING



“ WUE has allowed me to attend college without private loans or digging into my savings. Without it, I would have had to put my education on pause. An added plus is that I’m now located much closer to my grandmother and am able to help her out. I am so grateful for WUE. ”

ALINA Washington resident, Software Engineering, Utah Tech University

## Regional collaboration



WICHE brings together senior academic leaders to foster dialogue about issues facing individual institutions through its leadership and professional development networks.

### WESTERN ALLIANCE OF COMMUNITY COLLEGE ACADEMIC LEADERS – 2-YEAR INSTITUTIONS

- ▶ Salt Lake Community College
- ▶ Snow College

Clifton Sanders, Salt Lake Community College, serves on the Alliance executive committee.

### WESTERN ACADEMIC LEADERSHIP FORUM – 4-YEAR INSTITUTIONS

- ▶ University of Utah
- ▶ Utah System of Higher Education
- ▶ Utah Technical University
- ▶ Utah Valley University

David Connelly, Utah Valley University, serves on the Forum executive committee.

**WESTERN ACADEMIC LEADERSHIP ACADEMY** is a year-long professional development program for academic leaders aspiring to become chief academic officers in the WICHE region. Three cohort members from Utah institutions have participated in the Academy since its inception in 2015.

**INTERSTATE PASSPORT®** is a national network of institutions that simplifies the transfer process, as well as saves students time and money as they successfully complete their degree. Network members include Salt Lake Community College, Snow College, Southern Utah University, The University of Utah, Utah State University, Utah Tech University, and Weber State University, are members of the Network.

Utah participates in the **STATE AUTHORIZATION RECIPROCITY AGREEMENT (SARA)** through WICHE. This voluntary agreement provides reciprocity for the state authorization of distance education. WICHE Commissioners have been strong advocates for protecting the state voice in important governance decisions affecting this agreement and staff continue to support participating states and improving student protections while bolstering access.

## Optimal behavioral healthcare



WICHE Behavioral Health Program (BHP) co-administers the **MOUNTAIN PLAINS MENTAL HEALTH TECHNOLOGY TRANSFER CENTER (MP-MHTTC)**. The MP-MHTTC provides comprehensive training, resources, and technical assistance to mental health providers and other practitioners in the SAMHSA Region 8. Region 8 is comprised of Colorado, Montana, North Dakota, South Dakota, Utah, and Wyoming.

In October 2022, WICHE BHP was awarded a multiyear grant from SAMHSA to establish the **MOUNTAIN PLAINS RURAL OPIOID TECHNICAL ASSISTANCE CENTER OF EXCELLENCE (MP ROTAC)**. The MP ROTAC develops and disseminates resources, training, and technical assistance that focuses on opioid and stimulant misuse in rural areas throughout SAMHSA's Region 8.

WICHE Behavioral Health Program (BHP) administers the **RURAL COMMUNITIES OPIOID RESPONSE PROGRAM (RCORP)**, a multiyear initiative supported by the Health Resources & Services Administration to identify treatment barriers and best practices for preventing and treating substance use disorder. BHP provides technical assistance to 76 grantees across the U.S., supporting 36 grantees in the WICHE region. RCORP supports three grantees across five sites in Utah: University of Utah, Southern Utah University, and Intermountain Healthcare, Inc.

## Sound public policy



***KNOCKING AT THE COLLEGE DOOR*** is the leading U.S. resource for projections of college-ready students. *Knocking*, which includes a quadrennial publication with additional analysis, is essential for postsecondary policymakers, planning and workforce efforts, and economic development. Visit [knocking.wiche.edu](http://knocking.wiche.edu) to access reports, interactive dashboards, webinars, presentations, as well as state-level data.

**DATA RESOURCES** WICHE offers curated data and policy resources to support better-informed decision-making. WICHE’s research projects and collaborations cover postsecondary completion, health workforce development, behavioral health in postsecondary education, open educational resources (OER), state finance, prior learning assessment, and more.

- ▶ **Tuition and Fees in the West** includes tuition, fees, and enrollment data about 350+ public institutions in the West.
- ▶ **Benchmarks: WICHE Region** presents information on the West’s progress in improving access to, success in, and financing of higher education.
- ▶ Data on over 35 indicators in WICHE’s **Regional Fact Book for Higher Education in the West**.

## Innovative solutions



**WCET – THE WICHE COOPERATIVE FOR EDUCATIONAL TECHNOLOGIES** is the leader in the practice, policy, and advocacy of technology-enhanced learning in higher education. Its growing membership includes institutions, higher education agencies and systems, nonprofit organizations, government agencies, and corporations in all U.S. states and several Canadian provinces. WCET members include:

- ▶ Brigham Young University
- ▶ Salt Lake Community College
- ▶ University of Utah
- ▶ Utah State University
- ▶ Utah System of Higher Education
- ▶ Western Governors University

Chantae Recasner, Western Governors University, serves on the WCET Steering Committee and is a past winner of WCET’s award honoring emerging leaders.

**STATE AUTHORIZATION NETWORK (SAN)** helps guide institutions through state regulations around online courses and programs. SAN members include:

- ▶ Brigham Young University-Utah
- ▶ Broadview University
- ▶ Dixie State University
- ▶ Eagle Gate College
- ▶ LDS Business College
- ▶ Midwives College of Utah
- ▶ Newmont University
- ▶ Rocky Mountain University of Health Professions
- ▶ Salt Lake Community College
- ▶ Snow College
- ▶ Southern Utah University
- ▶ Stevens-Henager College
- ▶ University of Utah
- ▶ Utah SARA Private institutions
- ▶ Utah State University
- ▶ Utah System of Higher Education
- ▶ Utah Valley University
- ▶ Weber State University
- ▶ Western Governors University
- ▶ Westminster College

WICHE has convened the **OERWEST NETWORK**, which is part of a nationwide collaborative to scale the development and adoption of free course materials. Open educational resources (OER) have shown promise in improving student outcomes, particularly for poverty-affected students, for whom the high cost of textbooks can be a barrier to postsecondary success.

## UTAH COMMISSIONERS



**PATRICIA JONES**  
CEO, Women’s Leadership Institute and Member, Utah Board of Regents



**ANN MILLNER**  
Senator, Utah State Senate



**DAVID WOOLSTENHULME**  
Commissioner of Higher Education, Utah System of Higher Education

## LEGISLATIVE ADVISORY COMMITTEE

**Melissa Ballard**  
Representative, Utah State Legislature

**Keith Grover**  
Senator, Utah State Legislature

**Michael McKell**  
Senator, Utah State Legislature

**Ann Millner**  
Senator, Utah State Legislature