



Beyond Tradition(al): Marketing Higher Education to All

Beyond Tradition(al): Marketing Higher Education to All

Moderator: Brock Tessman, Montana University System

Panelists: Tom Gallagher, Missoula College
Scott Lemmon, Montana University System
Neil Woolf, Southern Oregon University




Apply Montana

Your launchpad to college & career



Awareness Campaign

Our streamlined college application process helps you light the fuse. It's FREE. It's easy. Start right now.

[START HERE](#)

Help YOUR students find their
PATH to life after high school.

[START HERE](#)

Apply Montana



Continued

Our streamlined college application process helps you light the fuse.
It's FREE. It's easy. Start right now.

[START HERE](#)



Apply Montana



Your launchpad to college & career

[START HERE](#)



Help **YOUR**
students find their
PATH to life after
high school.



MUS.edu

MENU

Apply Now

Contact Us

Apply Montana

Discover What's Out There

16 colleges. 652 programs. 39,596 students. All working toward viable and prosperous careers. How does education fit into your future? We'll help you find out.

Who Are You?

High School Student

Adult Learner

Parent

Guidance Counselor

Looking for one-on-one help? [Get in touch](#)

Where Education Creates Outcomes

Nursing. Agriculture. Welding. Two-year degree. Four-year degree. Certificate. The list of options goes on. What works for you? Start by seeing what's out there — and find a degree that leads to where you want to go.

Explore by Career

QUESTION 1

How close do you want to be to home?

QUESTION 1

QUESTION 2

How much money would you like to make?

QUESTION 2

QUESTION 3

What are your favorite school subjects?

QUESTION 3

FIND YOUR PATHWAY

Not sure? [Explore all career pathways](#)

Explore by College

University of Montana - Missoula

Missoula College - University of Montana

Bitterroot College of The University of Montana

Montana Technological University

Highlands College of Montana Tech

The University of Montana Western

Helena College - University of Montana

Montana State University - Bozeman

Gallatin College - Montana State University

Montana State University - Billings

City College at Montana State University-Billings

Montana State University - Northern

Great Falls College - Montana State University

Dawson Community College

Flathead Valley Community College

Miles Community College

Tribal Colleges

FIND THE COLLEGE FOR YOU

MUS.edu

MENU

Apply Now

Contact Us

Apply Montana

The Sky is the Limit

"I had worked other jobs, but I wanted one where I could continue to learn and grow. The networking field is perfect for that."

— Chris,
Network Support & Security

01

02

03

Where Education Creates Outcomes

Nursing. Agriculture. Welding. Two-year degree. Four-year degree. Certificate. The list of options goes on. What works for you? Start asking questions — and find a degree that leads to where you want to go.

QUESTION 1

How close do you want to be to home?

QUESTION 1

QUESTION 2

How much money would you like to make?

QUESTION 2

QUESTION 3

What are your favorite school subjects?

QUESTION 3

FIND YOUR PATHWAY

Not sure? [Explore all career pathways](#)

Here for Your Journey

Montana University Systems is here to help you find an educational path that fits where you want to go in your career. Between the 16 colleges and universities that comprise MUS, plus all of our educational programs starting as early as middle school, we have the tools and resources to help.

COMMON QUESTIONS

What schools are in the Montana University System?

How much will college cost me?

What does MUS do to support me?

Can I contact someone for help?

Study Up — on Studying Up

Higher education can seem overwhelming. It shouldn't be. Find out what it costs. Find out the differences between a certificate and a degree and how they can increase earning potential. Find out what programs are available and where they can lead you. And find out how to apply.

The Counselor

So many students, so little time. Find information you can easily pass along, plus resources your students can use to chart their own course.

Tools For You, Tools For Your Students.

How to Explore Career Options

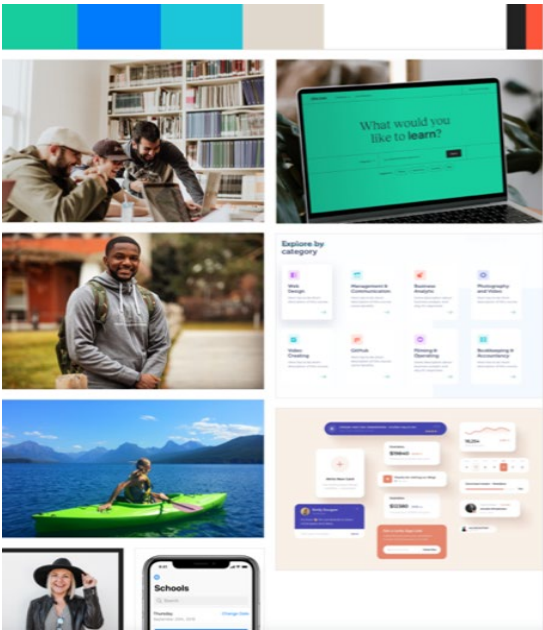
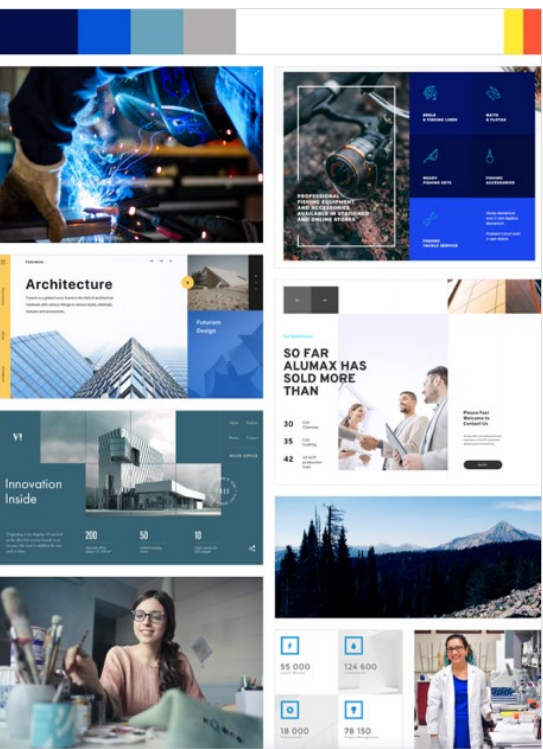
College 101: Making a Case for College

Prepare by Grade: A Roadmap Past Graduation

Resources for the Motivated Student

Get College Credit While in High School

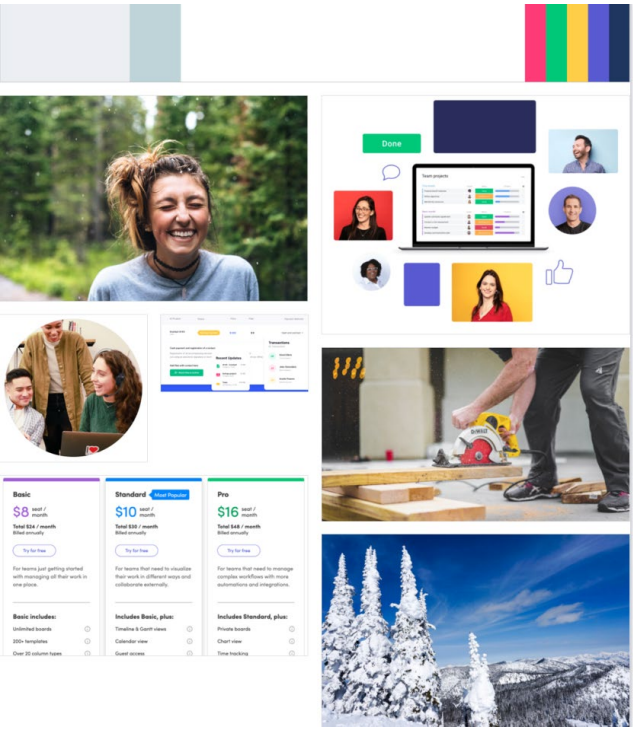
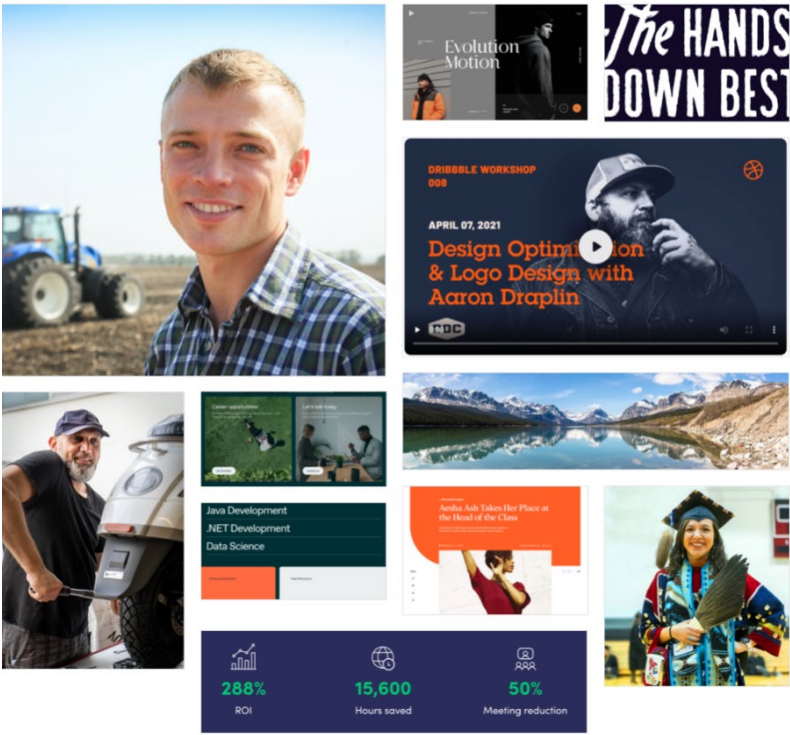
Gear Up for College



Apply Montana

Your launchpad to college & career

Design Process



Discover What's Out There

How does education fit into your future? We'll help you find out.



40,000+
students

16
colleges

1
university system

Apply Montana is a new website that provides a single point of entry to the MUS.

- Central Application for admissions that is free for all resident students
- Career & College Readiness tools designed for Students, Parents, & Educators



Agricultural Engineers

[Learn More](#)



AVG SALARY

\$80k

STUDY TIME

4yrs

10-YR GROWTH

Fast

PREPARE

- Have a high school diploma or equivalent
- Have a bachelor's degree in agricultural engineering
- Have a license

HELPFUL HIGH SCHOOL COURSES

- Computer Applications
- Computer Aided Design (CAD)



“ Learning on the job was an amazing part of the experience for me. I get to work with an awesome team that teaches me every day lorem ipsum. ”

Chris Hamilton Billings, MT

PROGRAMS TO CONSIDER

Drafting Technology, Highland College

Drafting Apprenticeship, Lorem Ipsum College

Drafting Technology, University of Montana



BECOME AN ALUM

READY TO FINISH YOUR DEGREE?
UNIVERSITY OF MONTANA



**BECOME AN
ALUM PROGRAM**




**BECOME
AN ALUM** **FINISH YOUR
DEGREE
AT UM!**





www.umt.edu/finishyourdegree



READY TO FINISH YOUR DEGREE?
DAWSON COMMUNITY
COLLEGE



**BECOME AN ALUM
PROGRAM**



READY TO FINISH YOUR DEGREE?
MILES COMMUNITY COLLEGE



**BECOME AN ALUM
PROGRAM**



BECOME AN ALUM

Department of Labor and Industry – Intensive Case Management Framework

LISTEN TO STUDENTS

- 1 Contact former students to inquire why they did not complete their degree.

IDENTIFY BARRIERS

- 2 Assist individuals by removing barriers to completion.

PROVIDE CAREER COACHING

- 3 Guide students into high demand careers through coaching. (self-sufficiency goal).

LISTEN TO EMPLOYERS

- 4 Learn about workforce needs and align programs to meet these needs.

STRESS EMPLOYABILITY SKILLS

- 5 Teach the skills and behaviors needed successfully transition from students to employees

BECOME AN ALUM

Results

- The impact of case management, individualized attention, and high touch advising is effective.
- It is hard work with low response rates and it can be difficult to accept that everyone is not motivated or able to return to college.
- Adult students are career-oriented. DLI is uniquely poised to recommend a spectrum of career options such as rapid and noncredit workforce education in addition to degrees and certificates.
- DLI has access to unique financial resources to support students for career education funding (eg. WIOA)

BECOME AN ALUM

Student Testimonial

"... the incredible impact the Become-An-Alum program has had on my life. Without the support of this program, and through it, the support of the Dept. of Labor & Industry, I could not have pursued a higher education. The decisions of my youth had left me in poor academic standing, rendering me ineligible for financial aid or loans. Become-An-Alum gave me the tools I needed to correct the mistakes I made nearly 20 years ago ... (I am now) pursuing a degree in Management Information Systems"

INDUSTRY-SPONSORED PROGRAMS

All in Missoula – ATG/Cognizant

Elite One Manufacturing

STEP
1

APPLY

Click on the link below to fill out the electronic application and attach your resume and a short cover letter.

[LEARN MORE >](#)

STEP
2

WAIT

Cognizant will do an internal review of your application and resume. We should get back to you within 7-10 days with the status of your application.

STEP
3

INTERVIEW

If we think you're a good fit, we will contact you to schedule an interview.

STEP
4

OFFER

If your skills and attitude match what we are looking for, we will invite you to join the team!

STEP
5

ONBOARD

You will receive more information on logistics, curriculum, and general expectations of the class.

STEP
6

TRAIN

Here's where the rubber meets the road. You will engage in a 12-week training program to prepare you for your new career. Details are below.

STEP
7

PROGRESS

We will monitor your participation and progress throughout the training, and have regular check-in sessions to assist you.

STEP
8

INTERVIEW

Upon completion of the training program, you will have an interview to assess your skills and your possible role at Cognizant.

STEP
9

CELEBRATE

You made it! You're now working with one of the most progressive technology companies in the world. Congratulations!



ELITE ONE SOURCE®
NUTRITIONAL SERVICES