

SUPER TYPHOON YUTU









NMC Business Simulation













SUPER TYPHOON YUTU DAMAGES

Damages Include:

- **Severe Damage to 37 (out of 39) Classrooms**
- **Severe Damage to all computer labs**
- **Destruction of NMC Cafeteria, Bookstore, Student Center**

SUPER TYPHOON YUTU DAMAGES

Complete Destruction

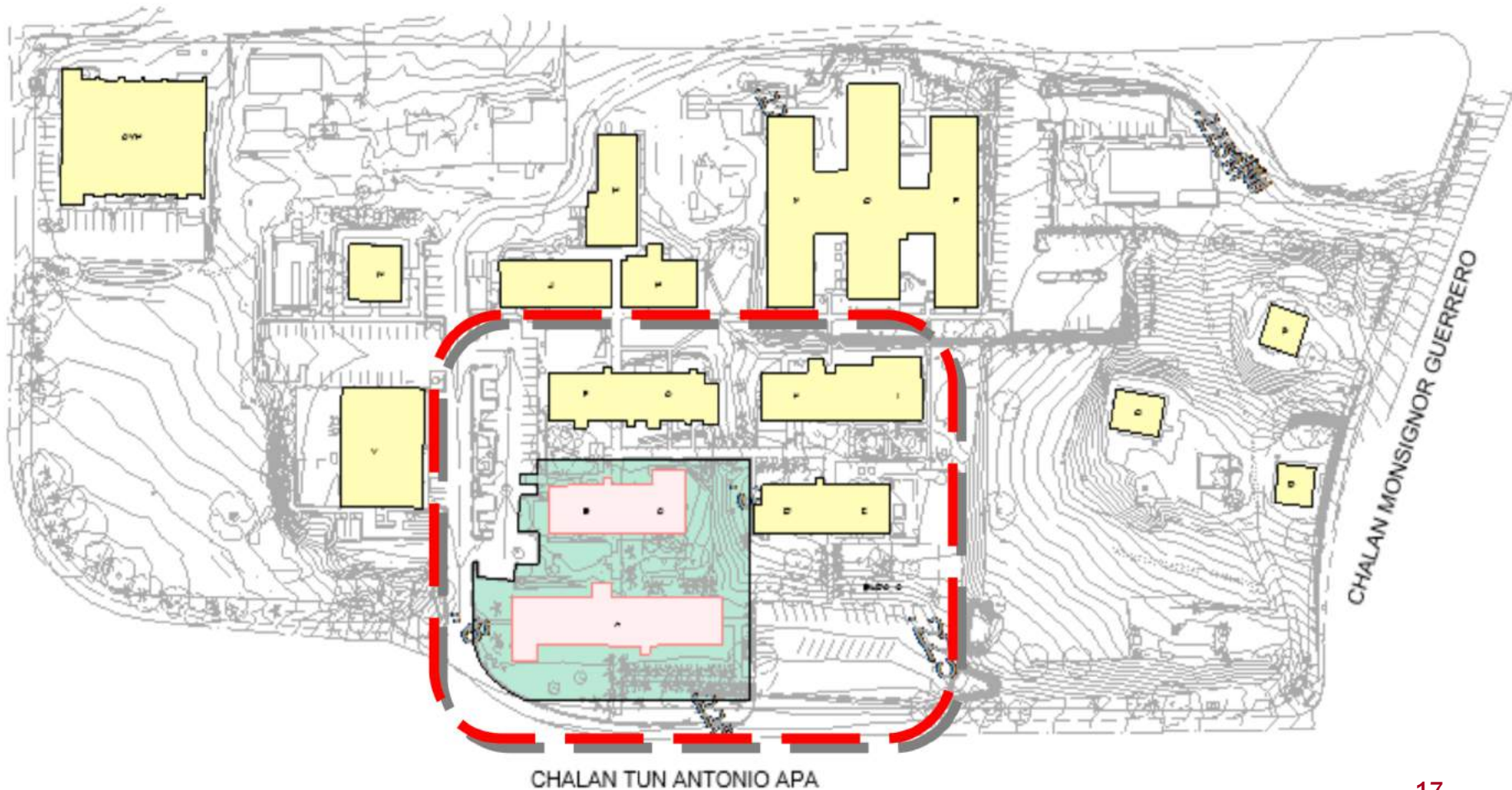
- **Adult Basic Education Building**
- **Facilities / Procurement Building**
- **CREES Aquaculture / CREES Offices**
- **NMC Gym**







REBUILDING NMC



REBUILDING NMC

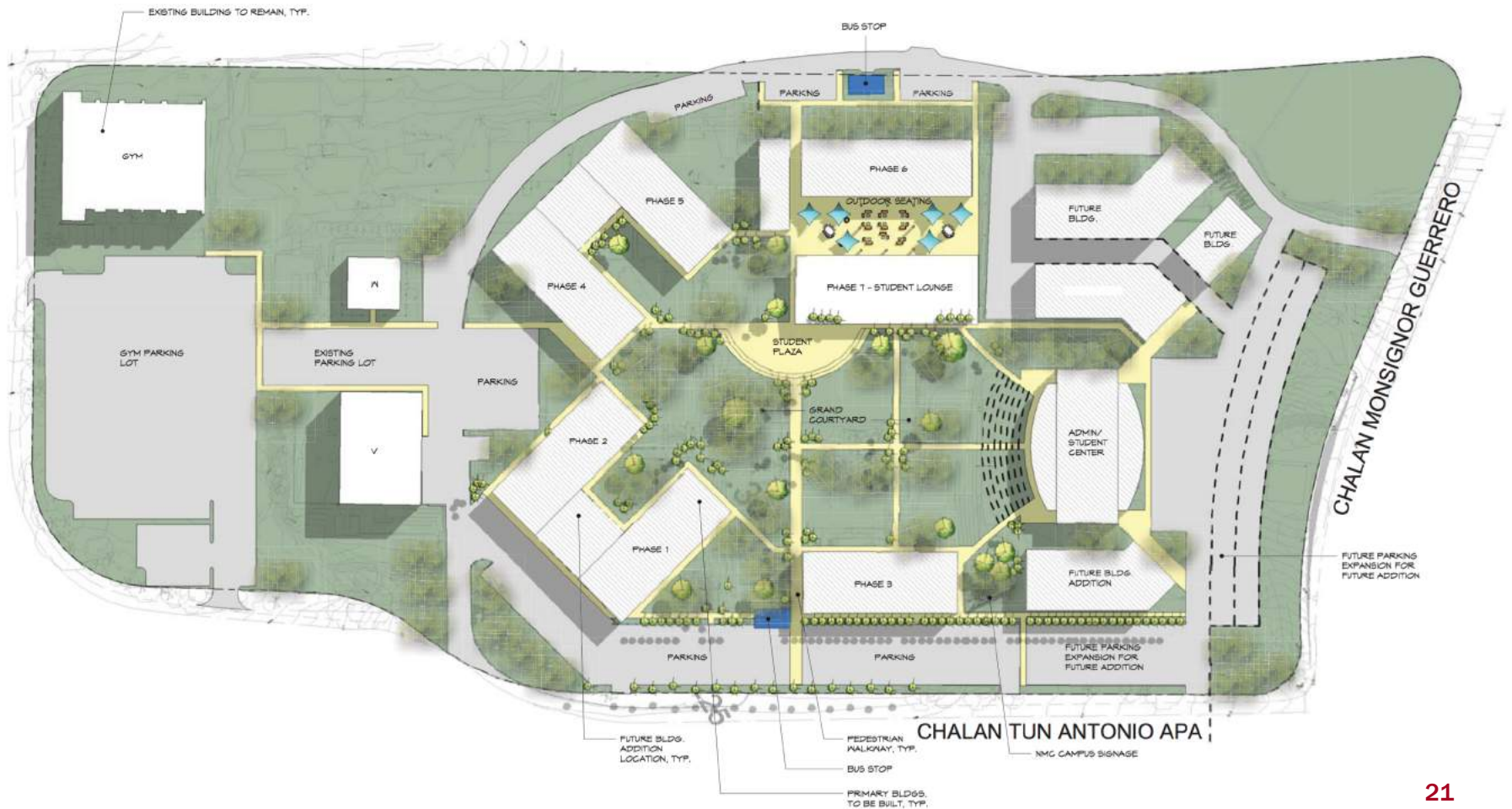


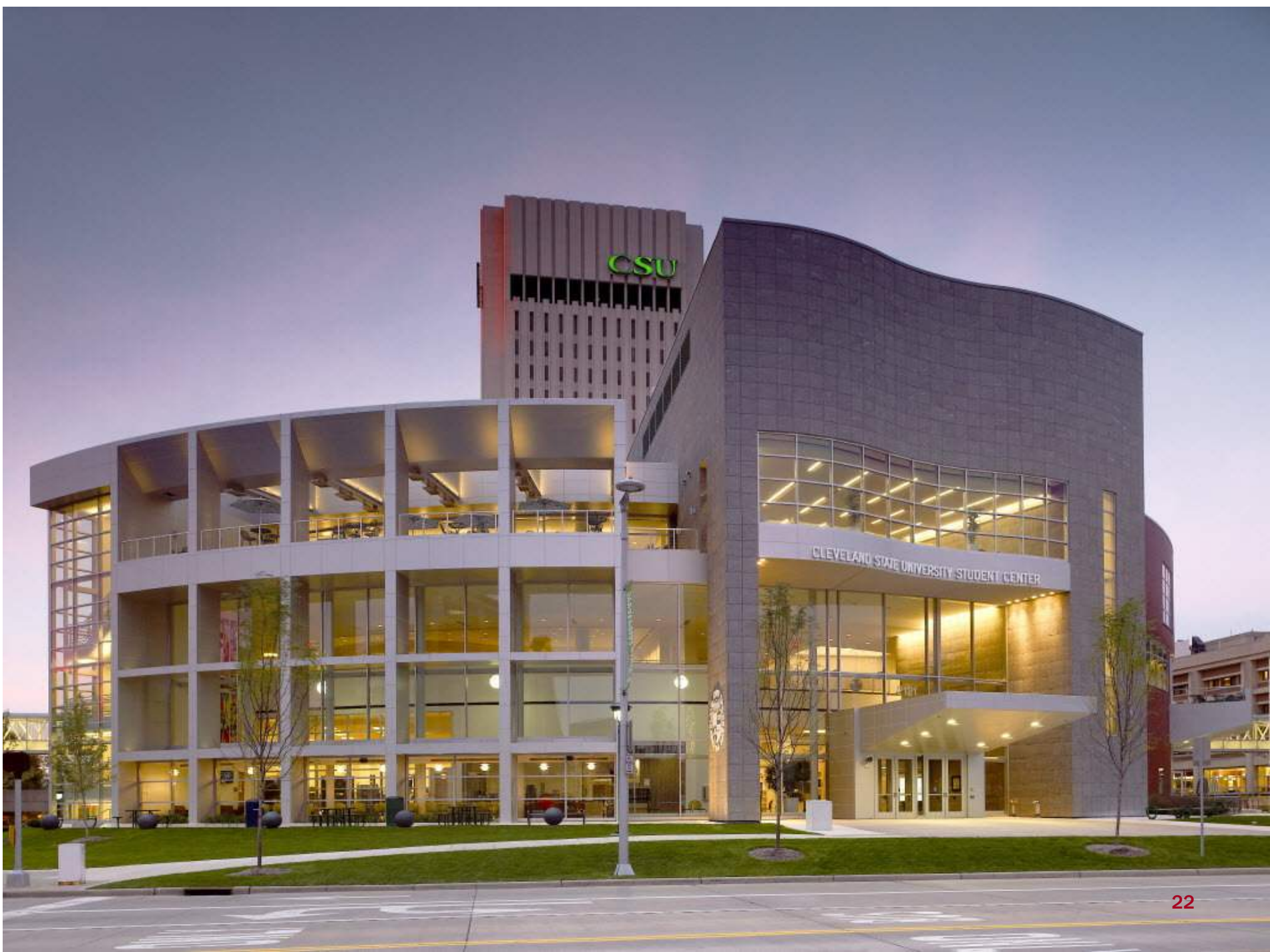
REBUILDING NMC



Phase	Facility	Estimate <i>(Rough estimates, not based on A&E)</i>	Possible Funding Source
1	Classrooms 40 classrooms, Computer Labs / Specialty Labs, Faculty / Instructor Offices	\$15M - \$18M	FEMA, U.S. EDA
1	Student Support Center -Bookstore, Career Center, Cafeteria, Disability Support Services, Counseling Services, Student Activities Center, International Student Center, Admissions Office, Financial Aid Project Proa, Library, Archives	\$17M	FEMA, USDA
1	Workforce Development Center -Regional Nursing Training Center, Center for Training and Innovation (formerly CDI), Adult Basic Ed, Includes 6 Classrooms, 2 of them Auditorium style, Computer labs	\$10M	FEMA, USDA, U.S. EDA
1	CREES -Nutrition and Health -Aquaculture -Agriculture -Family, Community, and Youth Development	\$6M	US EDA, USDA
2	Gym	\$5M	USDA
2	Parking Structure	\$2M	USDA
2	Student Housing	\$10M	USDA
	TOTAL	\$68M	

REBUILDING NMC





NORTHERN MARIANAS COLLEGE

**Thank
You!**