

National Student Clearinghouse

Presentation for

CACG Meeting

February 2010

Dr. Jeff Tanner, Vice President

The Clearinghouse

**A non-profit organization
founded in 1993 in affiliation with
several educational associations**

The Clearinghouse Mission

We serve the education community by facilitating the exchange and understanding of student enrollment, performance, and related information

Our Beginnings

- **Centered in the Federal Financial Aid programs**
 - **Student level identifiers**
 - **Enrollment terms and status**
 - **Institution type**
- **All enrolled students**

Participation

- **3,300+ colleges and universities**
- **93% of nation's enrollment**
(17.2 million currently enrolled students)
- **100+ million current and former students**
- **2,000+ high schools**

Clearinghouse Data

We receive data that is ...

Complete	All enrolled students
Current	Data is received at least 4 times each enrollment period
Comprehensive	Not bound by state boundaries or institutional sponsorship
Conclusive	Authentic - not survey or anecdotal

Requests from Superintendents

StudentTracker service

Diploma Verify service

Research Assessment service

What We Do For High Schools?

StudentTracker

- Where did student go after graduation?
- How long did they persist?
- Achievements

Future (critical mass)

- Transfer before HS graduation

A **cost effective** way to replace survey and anecdotal information with **documented** enrollment and degree data

What We Do For High Schools?

Diploma Verify

- Prospective employers
- Background screening firms
- Search firms

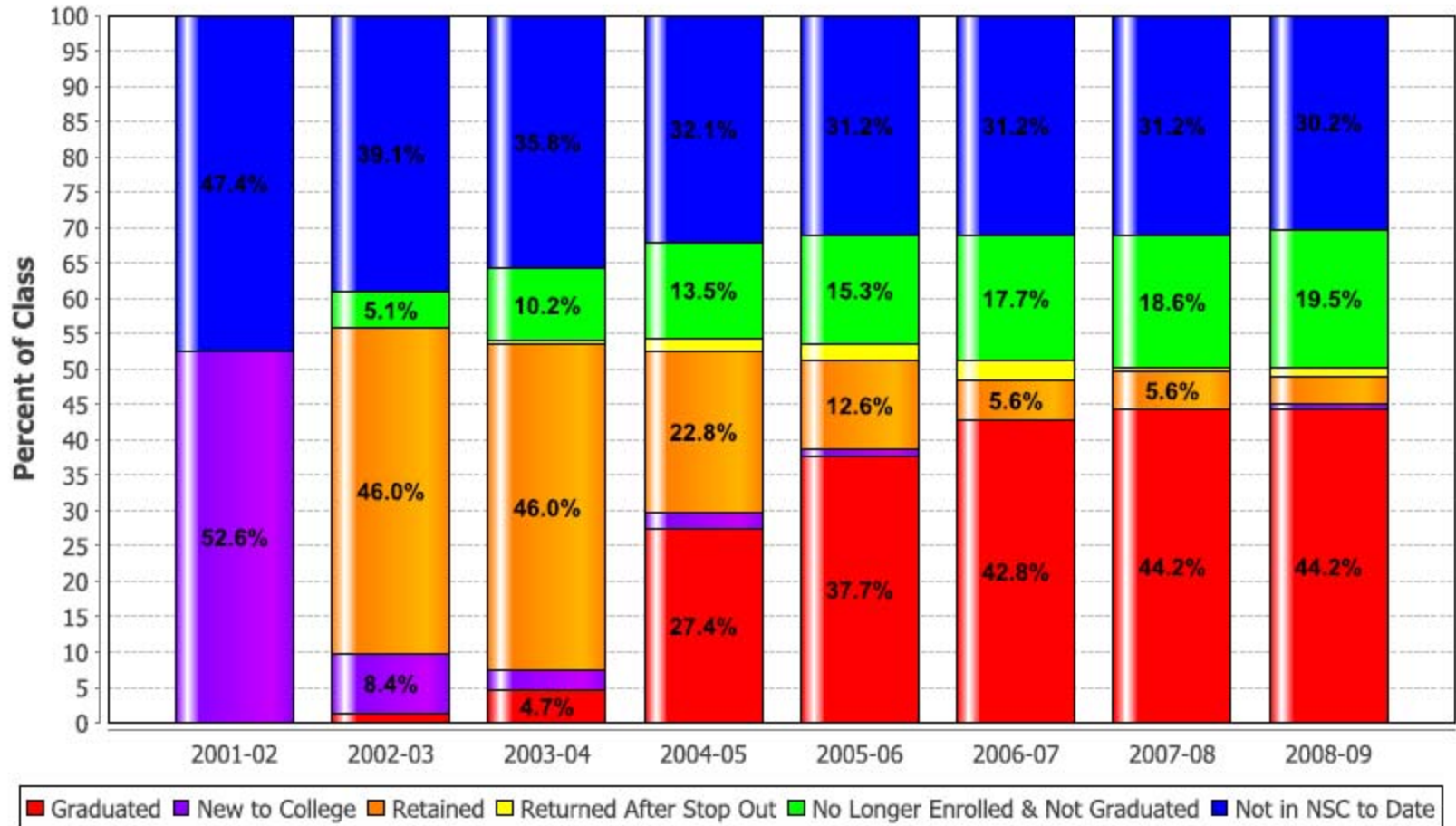
What We Do For High Schools?

Research Assessment

- Are interventions having the desired outcomes?
- What is happening to disadvantaged students?
- How long do students persist?
- What is the degree attainment after 8 years?

StudentTracker Report

Class of 2001 Postsecondary Enrollment and Progress



Montgomery County Public Schools

7 Key Indicators

- Read at advanced levels Grades K-2
- Score “advanced” in reading on state exam Grades 3-8
- Complete advanced math in Grade 5
- Complete Algebra 1 by Grade 8, “C” or better
- Complete Algebra 2 by Grade 11, “C” or better
- Score 3 on an AP or 4 on an IB exam
- Score 1650 on SAT or 24 on ACT

Sample Report

STUDENT DETAIL DATA SAMPLE* SAMPLE CENTRAL HIGH SCHOOL

Your Unique ID	Name First Mid Last	Requestor Suf.	Return Field	Record Found	High School Code	High School Grad Date	College Code	College Name	College State	2/4 Year	Public/Private	Period of Enrollment	Enroll Status	Grad?	Grad Date	Degree Title	Major
9878543210	SUSAN M SMART		CBA321	Y	100001	19990501	222222-00	LOCAL COMMUNITY COLI	NY	2	Public	19990823 19991215	F	N			
9878543210	SUSAN M SMART		CBA321	Y	100001	19990501	222222-00	LOCAL COMMUNITY COLI	NY	2	Public	20000118 20000510	F	N			
9878543210	SUSAN M SMART		CBA321	Y	100001	19990501	222222-00	LOCAL COMMUNITY COLI	NY	2	Public	20000828 20001220	F	N			
9878543210	SUSAN M SMART		CBA321	Y	100001	19990501	222222-00	LOCAL COMMUNITY COLI	NY	2	Public	20010122 20010518	F	N			
9878543210	SUSAN M SMART		CBA321	Y	100001	19990501	654321-00	LEARNED COLLEGE	CT	4	Private	20010827 20011219	H	N			
9878543210	SUSAN M SMART		CBA321	Y	100001	19990501	654321-00	LEARNED COLLEGE	CT	4	Private	20020122 20020515	H	N			
9878543210	SUSAN M SMART		CBA321	Y	100001	19990501	654321-00	LEARNED COLLEGE	CT	4	Private	20020826 20021218	H	N			
9878543210	SUSAN M SMART		CBA321	Y	100001	19990501	654321-00	LEARNED COLLEGE	CT	4	Private	20030121 20030514	F	N			
9878543210	SUSAN M SMART		CBA321	Y	100001	19990501	654321-00	LEARNED COLLEGE	CT	4	Private	20030825 20031217	F	N			
9878543210	SUSAN M SMART		CBA321	Y	100001	19990501	654321-00	LEARNED COLLEGE	CT	4	Private	20040120 20040515	F	Y	20040515	BA	HISTORY
5675675675	NANCY P SMITH		MNO678	Y	100001	20000501	011482-00	CITY INSTITUTE OF TECH	TX	4	Private	20000901 20001231	F	N			
5675675675	NANCY P SMITH		MNO678	Y	100001	20000501	011482-00	CITY INSTITUTE OF TECH	TX	4	Private	20000901 20001231	W	N			
1029384757	FRANK Z JONES		BLA729	N	100001	20010515											

*NOTE: The three examples above are of students who exhibit the following characteristics:

1. Susan Smart enrolled in college and persisted through graduation.
2. Nancy Smith enrolled in college and withdrew before graduating.
3. Frank Jones did not enroll in a college that participates in the Clearinghouse.

This worksheet offers a sample of the student-level detail data that you will receive electronically from the Clearinghouse.

StudentTracker Benefits

- Provides unit-level data for accountability studies
- Extremely flexible and easy-to-use
- Over 100 million student records archived
- Enrollment and Degree data available
- Fully FERPA compliant

Security & Privacy

Data Security Measures

- Secure web site access
- Secure FTP and PGP encryption standard
- Annual security audits
- No student data on laptops

Data Driven Public Policy

PK-20 State Longitudinal Data Systems

Government providing

- Funding to build

- Funding to gather data

- Desire for states systems to talk to each other

What happens long term?

Additional Costs

Long term operation

Report generation

Data analysis

Managing inter-state relationships

Approached by States & Orgs.

Economies of scale (e.g., state silos with required & optional data)

Single source for “system wide” data
(e.g., private & public, collegiate & high school, transfer out vs. drop out, etc.)

Ability to add data (e.g., GED, Military, Certificates)

WICHE SLDS Project

Four State Pilot Data Exchange Program (with at least 2 major objectives)

- Ensure that result in data systems that are compatible across state lines
- Equip participating states with information including movement over state lines in analysis of human capital development

WICHE SLDS Data

Clearinghouse holds HS data including:

- Identifiers (name, dob, gender, race/ethnicity, state & county of origin)
- Free/reduced lunch program
- High school
- Upper level math and science courses (each occurrence)
- AP courses (each occurrence)
- State exam score (latest)
- GPA term & graduation
- Diploma type & award date
- Collegiate data

Pilot Goals & Issues

WICHE wanted a trusted, neutral third party to address the linking of records for longitudinal tracking.

SLDS Development with consistent structures and attributes across state lines to account for the substantial number of students that cross state lines in the course of their careers.

Concerned that excessively rapid/uncoordinated database development can and will have the potential for unforeseen negative consequences.

Positioning

Clearinghouse Goal is to remain:

➤ Trusted

➤ Neutral

Trusted & Neutral

Trusted for over 16 years (100+ million student records and climbing)

Neutral - What not Why (inference remains with data recipient)

Contractual Relationship (data ownership and usage remains with data provider)

Voluntary Participation

That's Us In A Nutshell



Questions?

Contact Information

Dr. Jeff Tanner, Vice President
National Student Clearinghouse
2300 Dulles Station Blvd. Suite 300
Herndon, Virginia 20171
Phone: 703-742-4225
Fax: 703-742-5509