

WICHE Student Exchange Discussion Item

Programs & Services Committee

Denver, CO

November 5, 2007



Access

to WUE community colleges
for Hawaii residents

DISCUSSION ITEM



Background

WICHE policy states that HI residents can't use WUE to attend community colleges

- Participating in WUE: U H Manoa and U H Hilo
- HI WUE institutions don't offer associates degrees
- HI community colleges chose not to participate years ago



Other States Whose Community Colleges Don't Participate in WUE

- Oregon
 - South Dakota
 - Washington
- >>However, these states offer associates degrees through their 4-year institutions

Hawaii Students Enrolled at WUE Community Colleges (AY 2006)

- Arizona – 61 students
 - Colorado – 1 student
 - Nevada – 24 students
 - North Dakota – 2 students
 - Utah – 6 students
 - Wyoming – 6 students
- >> Many calls from prospective students, their parents, and WUE community colleges who are confused by the current policy
- >> California students have been enrolling in community colleges through WUE

Future Requested Action

- Repeal the old policy and allow Hawaii residents access to WUE community colleges
- Staff will increase efforts to attract community colleges from **CA, HI, OR, SD, WA** to participate in WUE



WICHE Student Exchange

Update

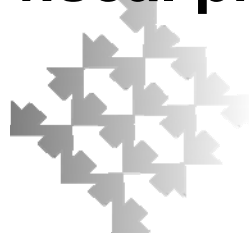
Programs & Services Committee

Denver, CO

November 5, 2007

Why Regional Student Exchange?

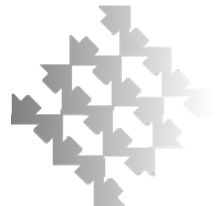
**An effective policy tool
that helps states
relieve fiscal pressures**



and helps **build and maintain
the regional workforce**

Western Undergraduate Exchange (WUE)

- Students pay **150% of resident** tuition at **136 participating institutions**
- Schools fill empty seats, diversify student body
- Savings in AY 2007 = **\$138.2 M for ~ 22,100 students**
- **Newest institutions:**
 - CSU East Bay
 - CSU San Bernardino

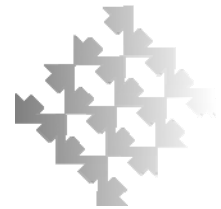


State	Inbound	Outbound
Alaska	453	1,606
Arizona	2,711	893
California	408	3,807
Colorado	1,486	2,632
Hawaii	2,050	1,404
Idaho	1,908	1,107
Montana	1,724	1,163
Nevada	2,726	872
New Mexico	402	670
North Dakota	1,413	401
Oregon	1,659	1,506
South Dakota	1,286	749
Utah	773	777
Washington	717	3,256
Wyoming	2,370	1,243
TOTAL	22,086	22,086

Fall 2007
(preliminary)

Inbound & Outbound Migration

High-growth
Low-growth





Discussion



Western Regional Graduate Program (WRGP)

- **Distinctive** graduate programs at in-state tuition rate
- **High quality health care programs**
- **178 programs at 39 institutions**
- **~463 students** enrolled in Fall 2007
- **Trend: interdisciplinary & dual degrees**

WRGP: On the Horizon

- October 2007: New program nominations cycle
- 30 nominations (distinctiveness requirement was lifted for health-related programs)

- Winter 2007/08: Peer review process
- March 2008: Announce new programs
- April/May 2008: Add new profiles to WRGP Online database at <http://wiche.edu/sep/wrgp>

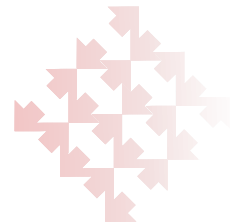
- Participation of new programs effective AY 2008 and AY 2009

Sampling of WRGP Nominations

- Nursing MS, PhD: NMSU, OHSU, UND, BSU
- Doctorate of Nursing Practice (DNP): U of A
- MS, Psychiatric Mental Health Nursing: NMSU, U Utah
- MS/PhD, Public Health: U of A, UCDHSC, U. Wash
- MS, Integrative Genomics: Black Hills State U.
- MS, Forensic Science: Southern Utah U.
- MS, Criminal Justice: UNLV
- MS, Metallurgical/Mineral Processing Engineering: Montana Tech

Professional Student Exchange Program (PSEP)

- 10 health care fields
- **773 students** funded in AY 2007
- **\$14,583,855** state investment in AY 2007
- Students pay **reduced tuition**
- Top three fields:
 - Vet med (222 students)
 - Dentistry (154 students)
 - Optometry (147 students)



PSEP Highlights - AY 2007



- Updated PSEP brochure
- AZ increased appropriations by \$600,000
- HI increased by \$250,000
- HI established a service payback, effective AY2008
- Teleconferences with professional associations

PSEP Support Fees Setting

- Support fees to be presented for approval
May 2008 (2009 and 2010 biennium)
- HECA increase: TBA
 - Last biennium fee increase @ 3.4%
- Anticipated issues:
 - Increase of pharmacy support fee (May 2007)
 - Adjustments: osteopathic medicine
 - Growing program lengths
 - Physician assistant studies
 - Doctorate in Occupational Therapy

PSEP Fields & State Support per Student

FIELD	2007-08 Fee	2008-09 Fee	Sending States
Dentistry	\$20,600	\$21,300	AK, AZ, HI, MT, NM, ND, WY
Medicine	26,500	27,400	MT, WY
Occup. Therapy	10,700	11,100	AK, AZ, HI, MT, WY
Optometry	14,100	14,600	AK, CO, AZ, HI, ID, MT, NV, NM, ND, UT, WA, WY
Osteopathic Med.	17,600	18,200	AZ, MT, NM, WA, WY
Pharmacy	6,300	6,500	AK, HI, NV
Phys. Therapy	9,700	9,700	AK, HI, WY
Physician Asst.	10,500	10,500	AK, AZ, NV, WY
Podiatry	12,300	12,300	AK, MT, NM, UT, WY
Veterinary Med.	26,300	26,300	AZ, HI, MT, NV, NM, ND, UT, WY

Seven New PSEP Partners

Pharmacy:

- University of Southern Nevada
- Univ. of California, San Diego
- Loma Linda University

Occupational Therapy:

- Touro University Nevada

Physician Assistant:

- Touro University California
- Touro University Nevada

Podiatry:

- Midwestern University

WICHE State Inventory of Incentives for Rural Health Care Professionals

- **What incentives** is the West using to attract health care professionals to practice in **rural** areas?





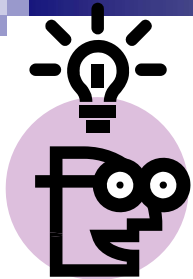
Goals of Inventory

- Assist WICHE state **policymakers to:**
 - **Evaluate** existing programs
 - **Increase support** for effective programs by combining private community, state and federal resources
 - Develop **new programs**
 - **Replicate** the best rural incentive programs

Menu of Regional Incentives

- Scholarships/tuition assistance with rural service paybacks
- Loan repayment
- Tax credits
- Direct financial incentives: residency stipends, malpractice premiums
- Rural facilities grants
- Retention grants





Incentive Awards of Note

- **Arizona:** Arizona Medical Student Loan Program:
 - MD and DO students
 - Approx. \$36,000/year in tuition & living allowance
 - 36 students awarded \$1.5M in AY 2006
- **North Dakota:** \$80,000 in loan repayment grants for three rural **veterinarians**
 - Program details TBA



ALASKA
ARIZONA
CALIFORNIA
COLORADO
HAWAII
IDAHO
MONTANA
NEVADA
NEW MEXICO
NORTH DAKOTA
OREGON
SOUTH DAKOTA
UTAH
WASHINGTON
WYOMING

Western Interstate
Commission for Higher
Education

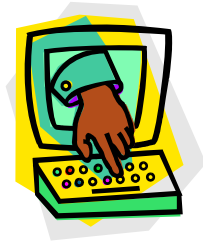
www.wiche.edu

Inventory of Rural Health Practice Incentives in the Western WICHE States

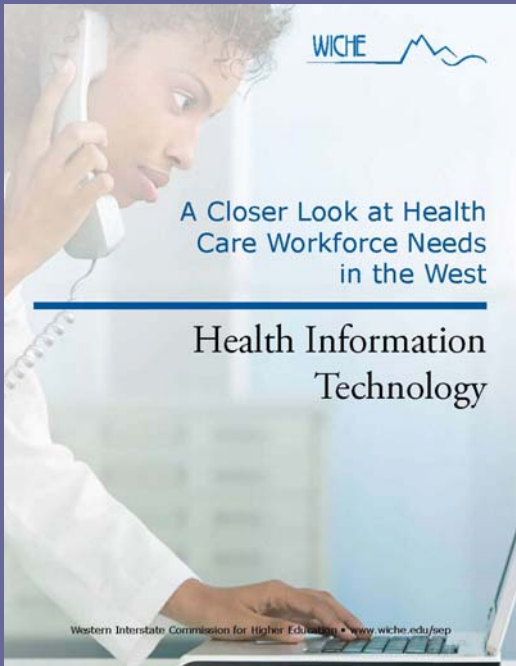
October 2007

Revisions will be
posted on
WICHE's website

Health Information Technology Workforce Needs in the West



- U.S. move to adopt HIT
- Estimated 49% growth in health information management (HIM) workers by 2010
- Decline in computer science majors
 - Fall 2000= 15,958
 - Fall 2005 = 7,952
- Implementation problem
 - Too few hands to deploy the technology



NEW! November 2007

Previously released





Higher Education's Response to HIT Workforce Needs

- Support legislation for HIT workforce development (HB 1467)
- Creation of new programs and sharing existing ones through distance education
- Promote HIT careers
- Train HIT faculty
- Coordinate with industry to define competencies by degree levels
- Conduct a national HIT workforce study

Observations: HIT Training Programs

- The West is behind in HIT:
 - Fewer programs in the West
(17 % WICHE, 83% non WICHE)
 - Fewer degrees granted in the West
(16 % WICHE, 84% non WICHE)
- Majority female enrollment in HIT (55%)
- Majority of programs at the certificate (55%) and associate (32%) levels
- Bachelors, masters, and doctorate: only 13.3%
- Diminishing role of medical coders, billers, transcriptionists– they will need to be retrained



Existing HIT Programs in the West (AY 2005)

- Health Information/Medical Records Administration/Administrator (Bachelor's)
 - Loma Linda University
 - Regis University
 - Boise State University
 - Dakota State University
 - Weber State University
 - University of Washington-Seattle Campus



Existing HIT Programs in the West (AY 2005) (*cont.*)

- Medical Informatics

- Montana Tech of the University of Montana (bachelor's)

- Information Technology

- 29 institutions in the West:
 - Distance ed institutions: U Phoenix, DeVry, Jones U.
 - Six CSU campuses



Discussion



“WICHE has programs that allow me to work off my student loans by

providing dental return to Nevada care to our

to practice community orthodontists.

members Barson, Rick Parrigini, City, Nevada D.D.S., Minden,

not be able to Nevada

INTENTIONS
who want to study
graduating, I set
optometry.
I have received
- Maria Plecha, O.D.,
from a “practice” in
Reno, Nevada
- Kathleen Rae Fisher,



Jere Mock
Senior Program Director, Programs & Services

jmock@wiche.edu

303.541.0222



Margo Schultz
Program Coordinator, Student Exchange

mschultz@wiche.edu

303.541.0214

<http://wiche.edu/sep>