

Non-Traditional No More: Policy Solutions for Adult Learners

New Grant Supported by
Lumina Foundation for Education

Public Policy and Research
WICHE

WICHE



The Project

\$755,100.00 Over two years

Three states selected via RFP

Employing two primary strategies

Across four higher ed arenas



The Three States

State 1

State 2

State 3

RFP sent to 50 states' SHEEOs, System Heads and Commissioners (January target)

Selected in early Spring (March target)

Each state receives \$65,000 over two years, 1:1 match

The Strategies

Identifying Ready Adults

*Data system extraction or mining

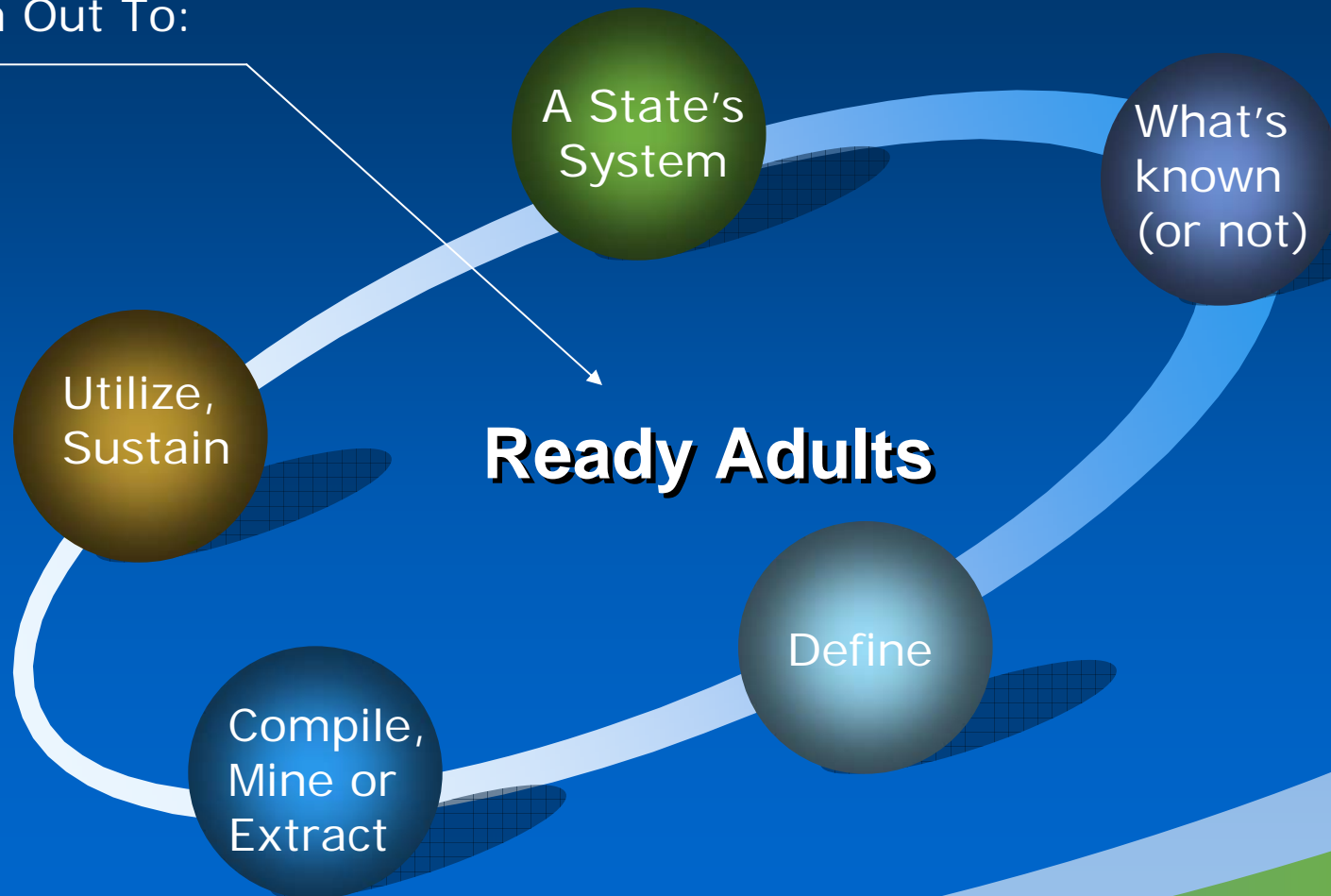
Building a Path to College Success

*Policy and practice revision



The Data Cycle: Identifying Ready Adults

Reach Out To:



Higher Education Areas of Policy Assessment, Change and Impact

Implementation

Policy analysis and revision

Academic

Student
Services

Financial
Aid

Information

Facilitated sessions in each area



Deliverables

Case studies

Consultant hired to perform case studies on each state; will be a separate publication.

Evaluation report

Evaluation consultant will follow all aspects of the program, states' work

Chapters/
Publication

Facilitators for each area (and data consultant) will write chapters on process, outcomes

PR Plan

Information groups in each state will create and publish PR Plan – implement in later phase



Personnel and Roles

- Dolores Mize – Project Director (and facilitator for Information groups)
- Demaree Michelau – Deputy P.D. [.50 FTE]
- Russ Poulin, WCET – (Co-facilitate academic groups with D. Michelau)
- David Longanecker (Facilitate financial aid/financing groups)
- Brian Prescott (Data support for lead consultant)
- Jeanette Porter (Administration)
- Consultants
 - Brenda Albright, Lead Evaluator (Changing Direction evaluator)
 - Jim Purcell, Lead Consultant for all data teams
 - TBD, Facilitator for Student Services
 - TBD, Case Study Evaluator*