

Western Interstate Commission for Higher Education

Programs & Services

FY 2012 WORKPLAN

WICHE FY 2012 WORKPLAN: Access & Success

Existing activities:

Broaden access to higher education

- **Manage and market WICHE's Student Exchange Programs** – more than 28,100 students benefit
 - **Professional Student Exchange Program (PSEP)**
\$14.25 million in state support; 116 programs in 10 academic fields, 52 institutions
 - **Western Regional Graduate Program (WRGP)**
More than 250 master's, PhD and graduate certificate programs at 46 institutions
 - **Western Undergraduate Exchange (WUE)**
147 two- and four-year institutions
 - **WICHE Internet Course Exchange (ICE)**
11 institutions and five consortia



WICHE FY 2012 WORKPLAN: Technology & Innovation

Western Academic Leadership Forum

- 47 institutions, systems and coordinating/governing boards participate from 15 states
 - Provosts, VPs of Academic Affairs, Chief Academic Officers (SHEEO offices)
 - Still expanding membership in each state: bachelor's, master's, and doctoral granting institutions
 - Chair: Stephanie Jacobson, AZ Board of Regents
 - 2012 Annual Meeting: Phoenix area

Western
Academic
Leadership
Forum



WICHE FY 2012 WORKPLAN: Technology & Innovation

Western Alliance of Community College Academic Leaders

- Created in 2010; one charter member from each WICHE state
 - Academic leaders from campuses and state community college systems
 - Address common issues and collaborate on innovative solutions

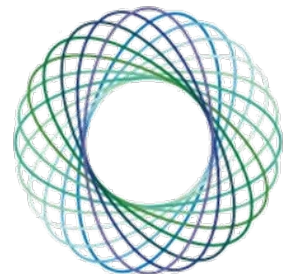
Western Alliance of
Community College
Academic Leaders



WICHE FY 2012 WORKPLAN: Technology & Innovation

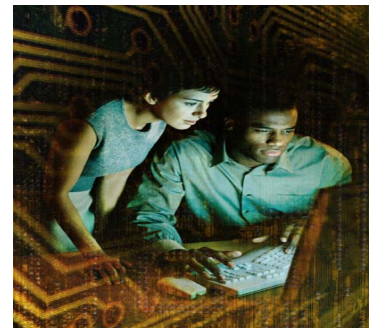
WICHE's Internet Course Exchange (ICE)

- An administrative tool designed to support collaboration among two-year and four-year institutions offering online courses and programs.
 - Students enroll, obtain advising, and use financial aid from their home campus, which transcripts the courses.
- 11 institutions and 4 consortia; impact approximately 30 institutions.
- Collaborative initiatives include:
 - North American Network of Science Labs Online (NANSLO)
 - Rural and frontier clinical social work certificate
 - NEXus: Nursing Education Exchange
 - Prospects: Native American Studies, foreign languages, sustainable energy, health IT, math/science courses for secondary teachers



WICHE FY 2012 WORKPLAN: Workforce

- **WICHE Student Exchange Programs**
- **WICHE Workforce Briefs**
 - Trends and projections in high demand fields
 - Mid-level providers: physician assistants and nurse practitioners
 - Veterinary medicine
- **Convene & support Regional Veterinary Medicine Advisory Council**



WICHE FY 2012 WORKPLAN: Finance



Existing Activities

- Expand institutional and system participation in the **MHEC/WICHE/NEBHE Master Property Program** (a property insurance and risk management consortium)
- Encourage institutions, K-12 entities, and government agencies to **purchase hardware and software** from the MHECtech purchasing collaborative

WICHE FY 2012 WORKPLAN: Communications Activities

Electronic and print communications

- Continue to refine redesigned WICHE website
- NewsCap
- Conference materials
- WICHE annual report and workplan
- Commission agenda books
- Publications
- WICHE/State factsheets
- Other materials



WICHE FY 2012 WORKPLAN:

Access/Workforce: New directions

- **Adding new fields/elements** to Student Exchange Programs, as workforce needs are identified, especially in the West's rural and underserved areas
 - Survey rural track programs in medicine, dentistry and vet med to identify best practices
 - WRGP: Fall 2012 program solicitation
 - PSMs, MS in Dental Hygiene, Nursing, Public Health, MPT to DPT (physical therapy); HIT; sustainable energy
 - New WICHE ICE academic collaborations: law, foreign languages; Online Consortium of Independent Colleges and Universities (OOCICU) partnership
- **Prospect: WICHE ICE is a partner in a proposal developed by the Colorado Community College System/Pueblo Community College and submitted in April to the U.S. Department of Labor Trade Adjustment Assistance Community College and Career Training Program (TAACCCT). Award announcement: Sept. 30, 2011**
 - The Western Alliance for Healthcare Education (WAHE) would involve more than 150 two-year institutions in 10 states
 - Institutions will create 200 online and hybrid healthcare courses, implement mobile labs, share extra capacity in the courses via WICHE ICE and participate in the creation of an interactive web portal to support students studying for a healthcare credential or seeking employment in the healthcare industry

WICHE FY 2012 WORKPLAN:

Access/Finance: New directions

New Forum and Alliance collaboration: the Interstate Passport Initiative

- An effort to increase student mobility by improving student transfer and articulation
- WICHE will seek funding to serve as facilitator; co-chairs represent two-year and four-year systems (NDUS and U HI System)
- Regional advisory committee will help shape initial plans to:
 - create a regional web-based portal providing information and links to statewide transfer policies and common core curriculum
 - work with groups of institutions to identify outcomes for general education foundational courses appropriate for students in the humanities and for students moving into majors for the STEP fields
 - develop interstate agreements for block transfer of general education requirements, and, overtime, to proceed toward regional block transfer of the gen ed core and cores for discipline-specific majors

WICHE FY 2012 WORKPLAN:

Technology & Innovations: *New directions*

Academic Leaders Toolkit

- **Expanding the Forum's and Alliance's new web-based, searchable planning and decision-making toolkit**
 - Provides best practices/lessons learned on relevant issues for academic leaders, developed by academic leaders
 - Examples: program review and prioritization (WSU), revised gen ed requirements (BSU); quality assurance, institutional restructuring, consolidations, faculty recruitment, etc.

WICHE FY 2012 WORKPLAN:

Innovation & Technology: *New directions*

- **Seek external funding to expand the North American Network of Science Labs Online**
 - More partners
 - More subject areas
 - Other technology solutions

WICHE FY 2012 WORKPLAN:

Technology & Innovation: *On the horizon*

- **Seek external funding to support ICE** in its efforts to help states and institutions share electronically-delivered courses & academic programs
 - Support for workshops for faculty communities to develop collaborative arrangements
 - Ideas in the works:
 - Online course in patient privacy
 - Survey of foreign language offerings and gaps
 - Partnership with New York Times Knowledge Network
 - Online supplemental instruction (tutoring, exam prep, mentoring) for gatekeeper courses
- **Recruit graduate programs on energy development to join WRGP network**

WICHE FY 2012 WORKPLAN: Workforce/Access:

Should this issue be on our horizon?

- ***Campus safety and security***
 - *What are potential roles for WICHE?*
 - *Technical assistance for institutions developing strategic action plans for sustaining campus activities in the event of natural disasters, infectious diseases, cyber attacks, or other prolonged incidents*
 - *Consulting services on enterprise risk management for institutions and systems*
 - *Other options?*

Programs and Services Staff



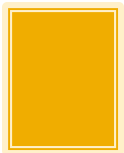
Jere Mock,
vice president



Margo Colalancia
program director, SEP



Pat Shea,
program director,
ICE, WALF, and WACCAL



Catherine Weldon
project coordinator
NANSLO (.75 FTE)(5/19/11)



Candy Allen,
graphic designer



Annie Finnigan,
communications manager
(.75 FTE)



Deborah Jang,
Web and design manager (.75
FTE)



Kay Hulstrom,
administrative coordinator



Laura Ewing,
administrative assistant

NANSLO

- Funded by Next Generation Learning Challenge Grant
- 15 months (April 15, 2011-July 15, 2012)
- Partners
 - Colorado Community College System, BCCampus, Colorado School of Mines, University of Wyoming, Laramie County Community College, University of Montana-Bozeman, Great Falls College of Technology, WICHE
- Three gateway courses: Biology, Chemistry, Physics
- Goals
 - Replicate BCCampus' Remote Web-based Science Labs
 - Produce open content lab courses
 - Conduct an environmental scan of RWSL labs
 - Produce a sustainability and expansion plan for NANSLO